

Supplementary Material

Cost-Effectiveness of Infliximab versus Conventional Combination Treatment in Methotrexate-Refractory Early Rheumatoid Arthritis: 2-Year Results of the Register-Enriched Randomised Controlled SWEFOT Trial

Jonas K Eriksson^{*,1}, Johan A Karlsson^{*,2}, Johan Bratt³, Ingemar F Petersson^{2,4}, Ronald F van Vollenhoven⁵, Sofia Ernestam⁶, Pierre Geborek^{**,2} & Martin Neovius^{**,1}

^{*,**} Contributed equally

¹Clinical Epidemiology Unit, Department of Medicine, Karolinska Institutet, Stockholm, Sweden

²Section of Rheumatology, Department of Clinical Sciences Lund, Lund University, Lund, Sweden

³Rheumatology Unit, Department of Medicine, Karolinska Institutet, Stockholm, Sweden

⁴Section of Orthopedics, Department of Clinical Sciences Lund, Lund University, Lund, Sweden

⁵ClinTRID, Department of Medicine, Karolinska Institutet, Stockholm, Sweden

⁶Department of Learning, Informatics and Medical Education (LIME), Karolinska Institutet, Stockholm, Sweden

Table of Contents

Figure S1 Distributions of costs and effects, and the incremental costs and effects of bootstrap samples	Page 2
Figure S2 Flow chart of the Swefot trial	Page 3
Figure S3 Mean accumulated costs and adjusted mean differences	Page 4
Figure S4 Bootstrapped incremental cost-effectiveness ratio plots in unadjusted analysis	Page 5
Figure S5 Cost-effectiveness acceptability curves in unadjusted analysis	Page 6
Table S1 Incremental costs, effects and cost-effectiveness ratios in unadjusted analysis	Page 7

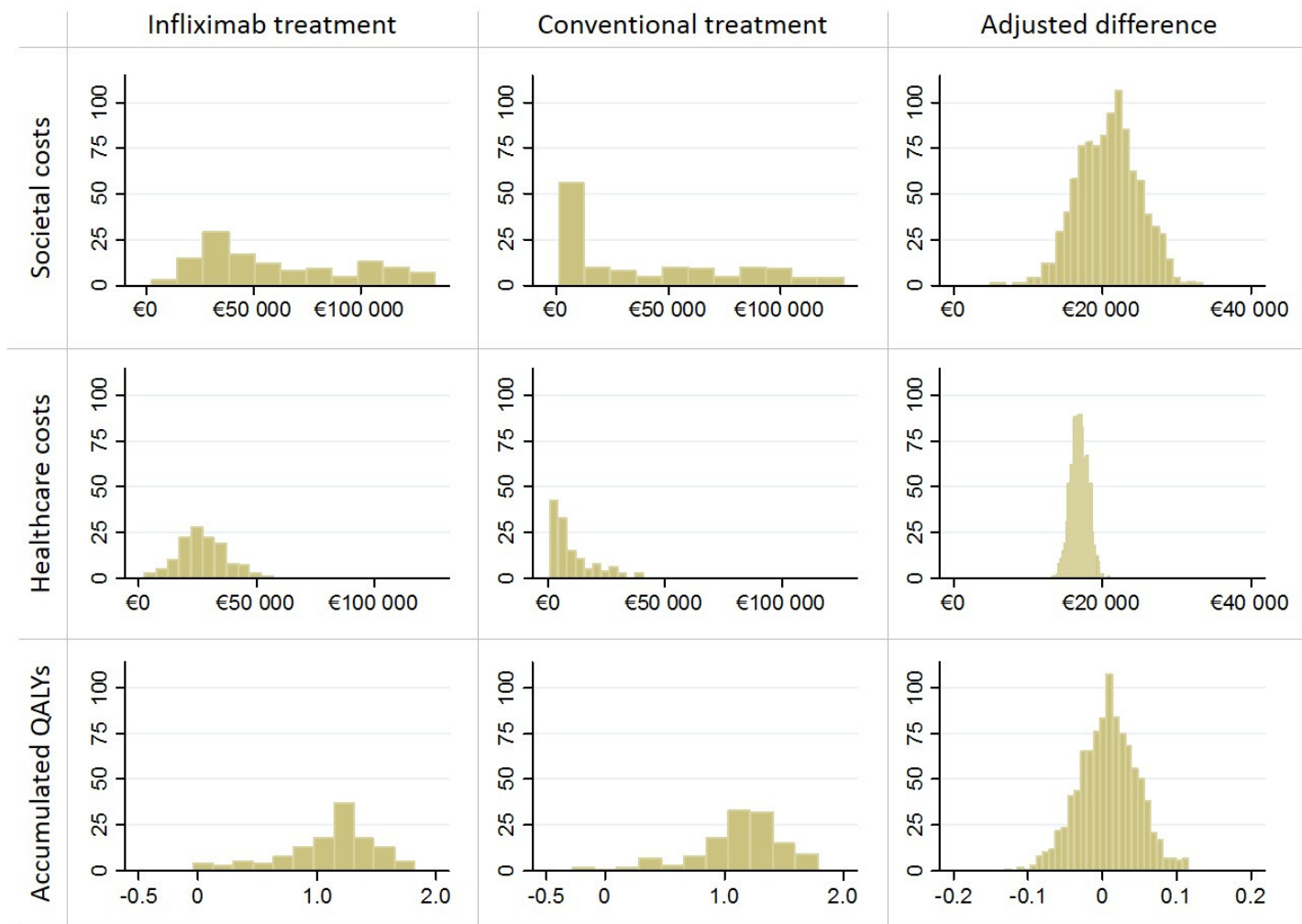


Figure S1 Distribution of societal costs, healthcare costs, accumulated QALYs (UK EQ-5D preference set), and the adjusted difference in bootstrap samples (y-axis represents number of patients)

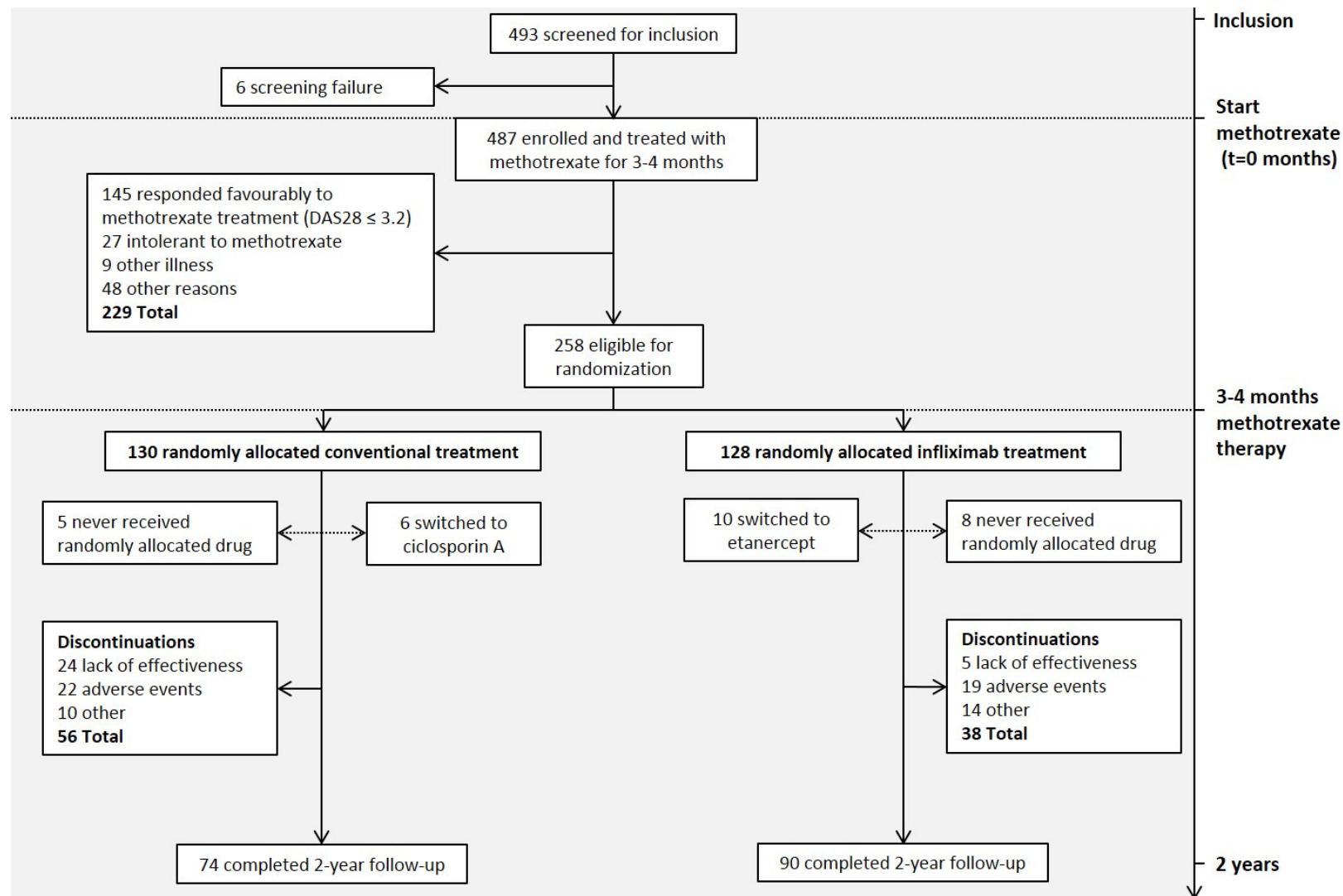


Figure S2 Flow chart of the Swefot trial

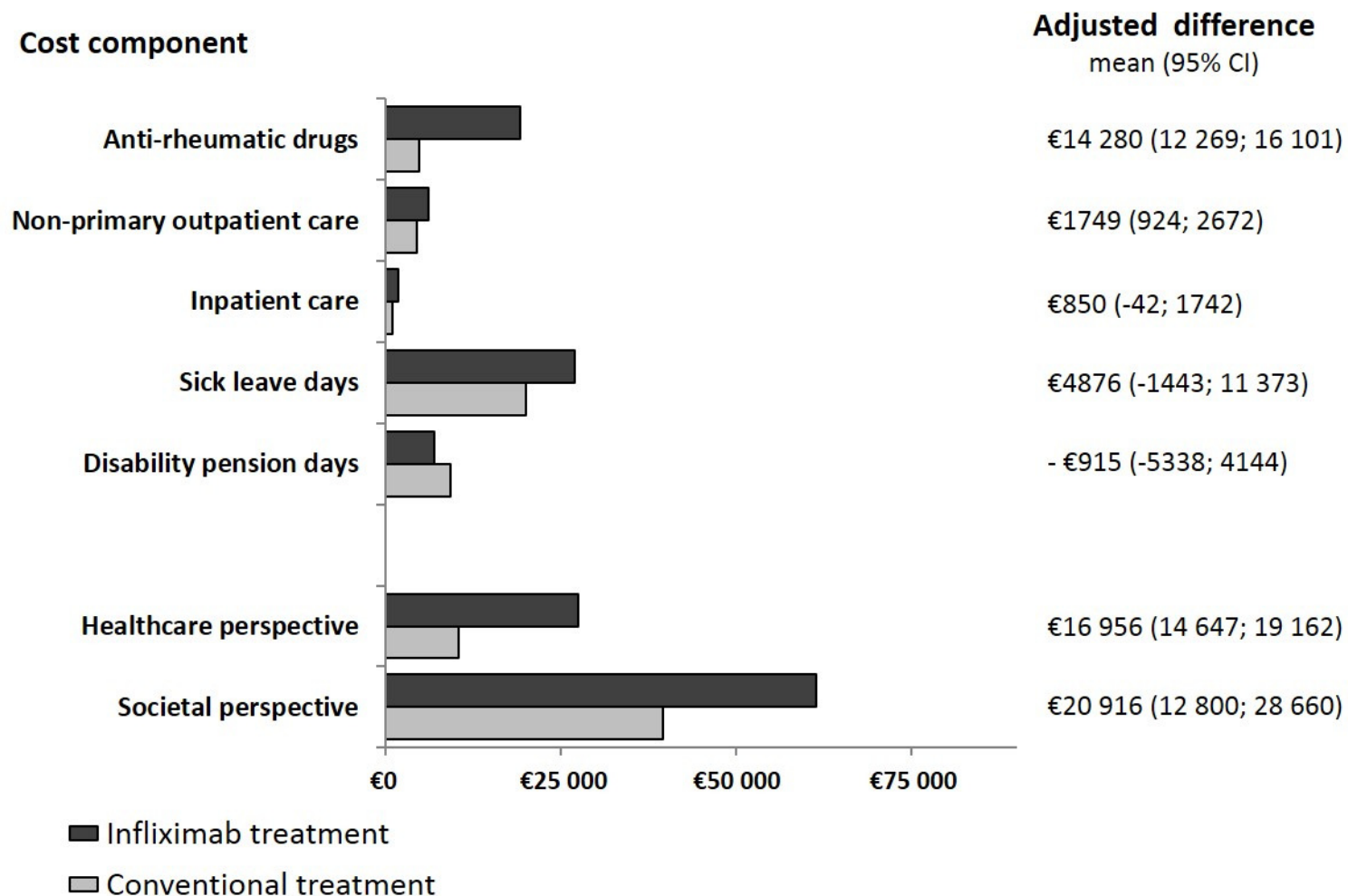


Figure S3 Mean accumulated costs and adjusted mean differences over 21 months of follow-up for the infliximab versus the conventional treatment strategy

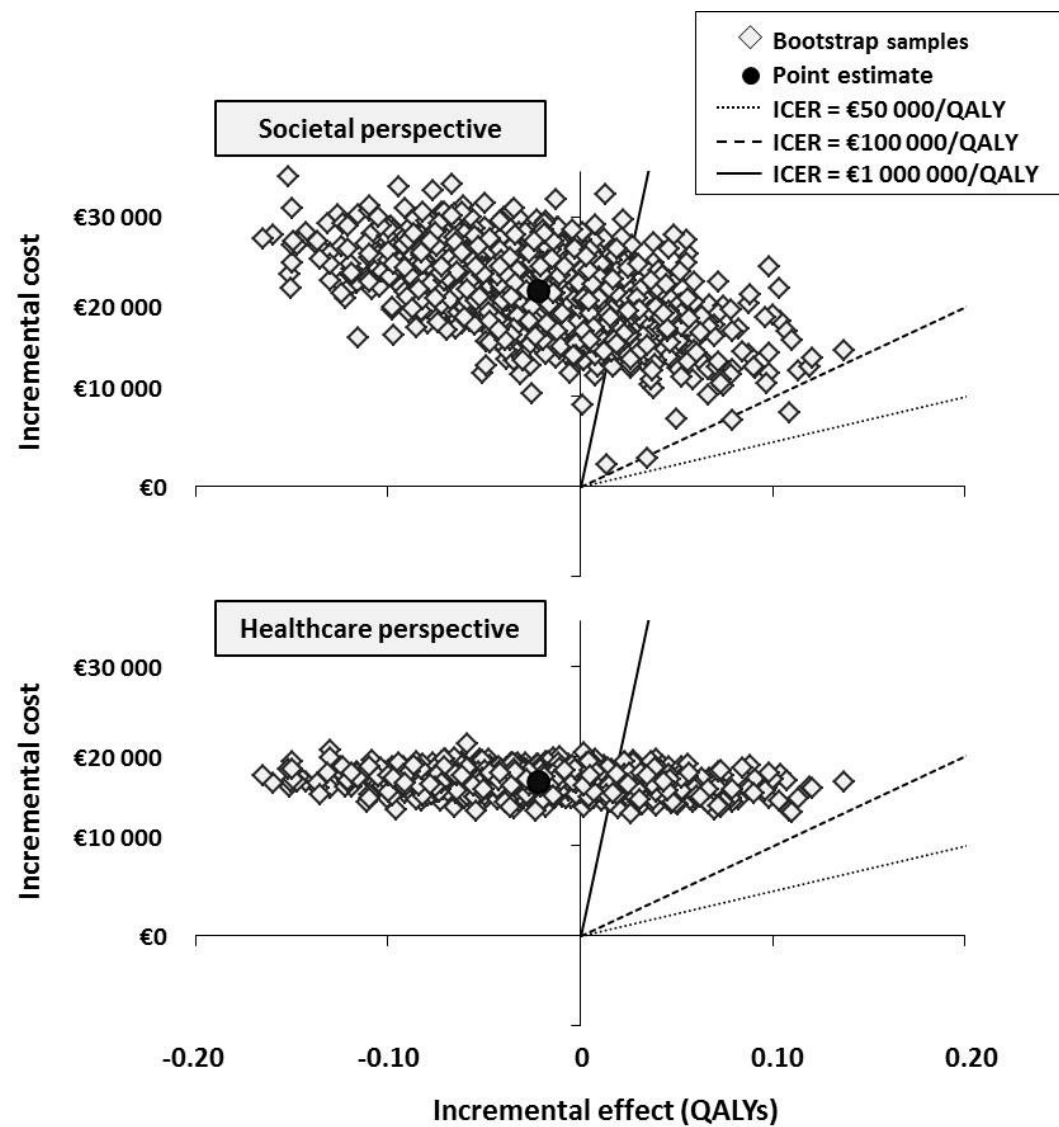


Figure S4 UNADJUSTED ANALYSIS: Bootstrapped incremental cost-effectiveness ratio plots

by societal and healthcare perspective for the infliximab versus the conventional treatment strategy

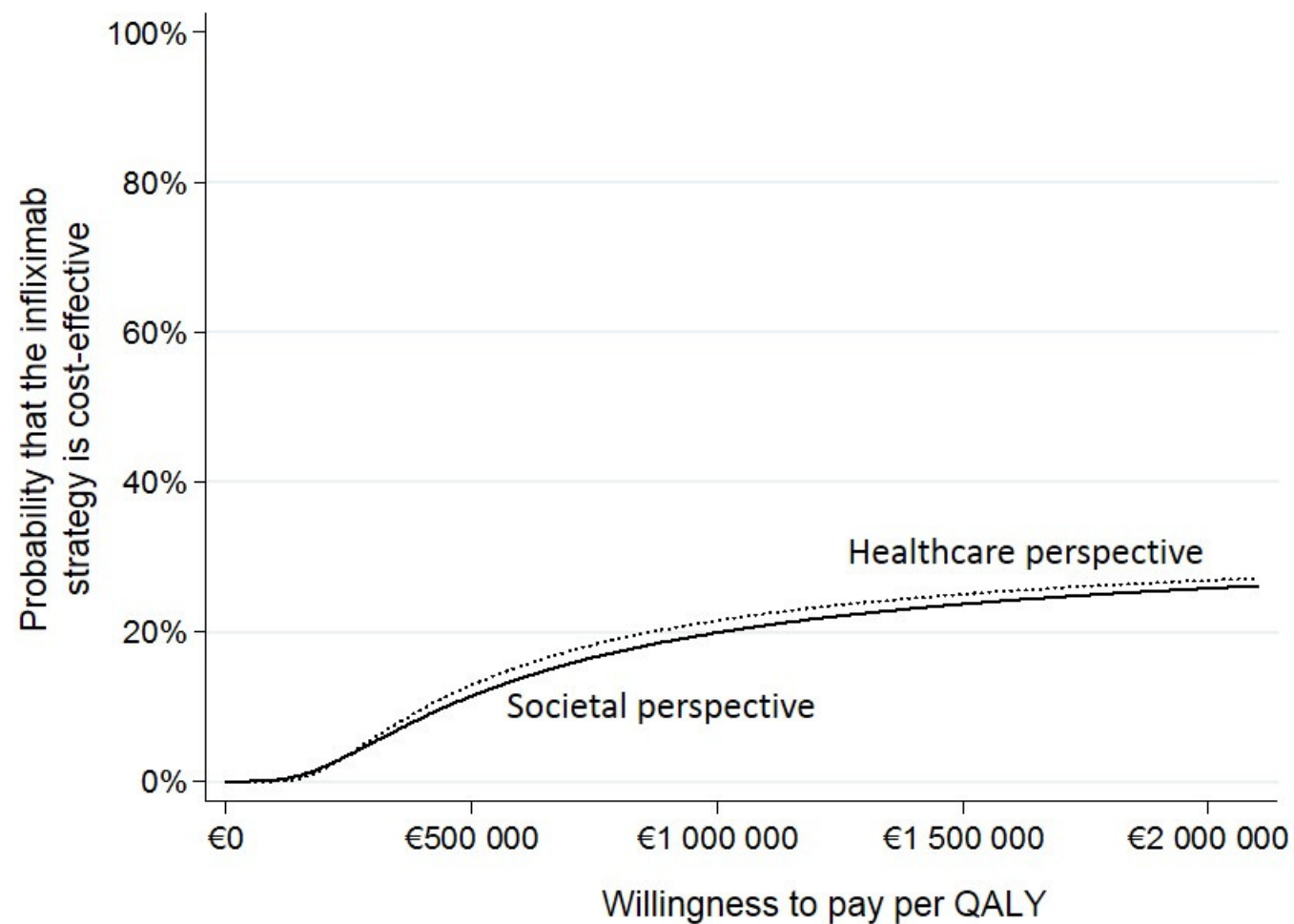


Figure S5 UNADJUSTED ANALYSIS: Cost-effectiveness acceptability curves by societal and healthcare perspective for the infliximab versus the conventional treatment strategy

Table S1 UNADJUSTED ANALYSIS: Mean costs, effects and cost-effectiveness ratios by the societal and healthcare perspective of the infliximab versus the conventional treatment strategy

Perspective/method	N	Mean difference in cost (€)	Mean difference in effect (QALY)	ICER (€/QALY)	% cost-effective at willingness to pay per QALY		
					€50 000	€100 000	€1 000 000
Societal perspective							
Overall	258	21 707	-0.022	-	0%	0%	20%
Sensitivity analysis							
- Friction cost method	258	19 703	-0.022	-	0%	0%	21%
- US EQ-5D	258	21 707	-0.011	-	0%	0%	18%
Healthcare perspective							
Overall	258	17 124	-0.022	-	0%	0%	22%
Sensitivity analysis							
- US EQ-5D	258	17 124	-0.011	-	0%	0%	20%

ICER = Incremental cost-effectiveness ratio

QALY = Quality-adjusted life-year

EQ-5D = EuroQol 5 dimensions