



OPEN ACCESS

## EXTENDED REPORT

# Association of hyperlipidaemia, inflammation and serological status and coronary heart disease among patients with rheumatoid arthritis: data from the National Veterans Health Administration

Iris Navarro-Millán,<sup>1,2</sup> Shuo Yang,<sup>1,2</sup> Scott L DuVall,<sup>3</sup> Lang Chen,<sup>1,2</sup> John Baddley,<sup>1,2</sup> Grant W Cannon,<sup>3</sup> Elizabeth S Delzell,<sup>2</sup> Jie Zhang,<sup>2</sup> Monika M Safford,<sup>2</sup> Nivedita M Patkar,<sup>2</sup> Ted R Mikuls,<sup>4</sup> Jasvinder A Singh,<sup>1,2</sup> Jeffrey R Curtis<sup>1,2</sup>

**Handling editor** Tore K Kvien

<sup>1</sup>Birmingham VA Medical Center, Birmingham, Alabama, USA

<sup>2</sup>University of Alabama at Birmingham Division of Clinical Immunology and Rheumatology, Birmingham, Alabama, USA

<sup>3</sup>VA Salt Lake City Health Care System and University of Utah School of Medicine, Salt Lake City, Utah, USA

<sup>4</sup>Omaha VA and University of Nebraska Medical Center, Omaha, Nebraska, USA

**Correspondence to**

Dr Jeffrey R Curtis, University of Alabama at Birmingham Division of Clinical Immunology and Rheumatology, 510 20th Street South, Faculty Office Tower 802D, Birmingham, AL 35294, USA; jcurtis@uab.edu

Received 30 November 2013

Revised 4 November 2014

Accepted 7 November 2014

Published Online First

21 January 2015



Open Access  
Scan to access more  
free content



CrossMark

**To cite:** Navarro-Millán I, Yang S, DuVall SL, et al. *Ann Rheum Dis* 2016;**75**:341–347.

**ABSTRACT**

**Objective** To examine the association of serum lipids, inflammation and seropositivity on coronary heart disease (CHD) and stroke in patients with rheumatoid arthritis (RA).

**Methods** The incidence of hospitalised myocardial infarction (MI) or stroke was calculated in a cohort of patients with RA receiving care within the national Veterans Health Administration from 1998 to 2011. Cox proportional hazard models were used to examine the association between these outcomes and low-density lipoprotein cholesterol (LDL-C), high-density lipoprotein cholesterol (HDL-C), C reactive protein (CRP) and erythrocyte sedimentation rate (ESR) as time-varying variables, divided into quintiles.

**Results** There were 37 568 patients with RA in the cohort with mean age of 63 years (SD 12.1); 90% were men. There was a no clear association between LDL-C and CHD/stroke. Compared with lower HDL-C (<34 mg/dL), higher HDL-C ( $\geq 54$  mg/dL) was inversely associated with MI (hazard ratio (HR)=0.68, 95% CI 0.55 to 0.85) and stroke (HR=0.69, 95% CI 0.50 to 0.96). Higher CRP >2.17 mg/dL (vs CRP <0.26 mg/dL) was associated with increased risk (HR=2.43, 95% CI 1.77 to 3.33) for MI and 2.02 (95% CI 1.32 to 3.08) for stroke. ESR >47 mm/h compared with <8 mm/h had an HR 1.87 (95% CI 1.39 to 2.52) for MI and 2.00 (95% CI 1.26 to 3.18) for stroke. The association between MI was significant for RA seropositivity (HR=1.23, 95% CI 1.03 to 1.48).

**Conclusions** In this predominantly older male RA cohort, there was no clear association between LDL-C and CHD, whereas higher HDL-C was inversely associated with MI and stroke. CRP and ESR were similarly associated with increase MI risk and stroke, reflecting the prominent role of inflammation in CHD risk in RA.

**BACKGROUND**

Coronary heart disease (CHD) is a common cause of death among patients with rheumatoid arthritis (RA) with increased risk for ischaemic events such as myocardial infarction (MI).<sup>1–4</sup> The magnitude of the association between several traditional cardiovascular risk factors in patients with RA is unclear given that the risk for MI has been reported mainly in small studies<sup>5 6</sup> and found to be high even when lipid levels and the prevalence of other traditional

cardiovascular risk factors were lower than in the general population.<sup>5–9</sup> Studies have suggested that the association between lipids with CHD may be confounded by inflammation.<sup>5</sup> For this reason, recent attention has been devoted to non-traditional CHD risk factors in RA that could predict CHD risk more accurately, including serum markers of RA and inflammation.

High levels of C reactive protein (CRP) have been associated with high risk for CHD in the general population,<sup>10</sup> but this relationship is less well studied in RA populations. Further complicating this relationship is also the relationship between inflammation, cholesterol and RA therapies, which has been analysed in few studies, and how this relates to CHD outcomes remains unclear.<sup>11 12</sup> In one relatively small study, CRP was only measured at baseline, a limitation in RA as inflammation fluctuates over the course of the disease.<sup>13</sup> The majority of RA studies examining the effect of inflammation, as reflected by high CRP and erythrocyte sedimentation rate (ESR), have shown increased atherosclerosis in patients with RA and elevated CRP,<sup>7 14</sup> but studies using CRP and ESR as time-variant risk factors for MI events in this population remain scarce and were done in relatively small RA patient cohorts.<sup>5</sup>

The association between high levels of CRP in patients with RA with greater atherosclerosis has been best described in patients who were autoantibody positive (rheumatoid factor (RF) or anticyclic citrullinated peptide (CCP) antibody).<sup>13 15</sup> One study<sup>13</sup> analysed CRP as predictor of CHD mortality in patients with RA based on their serological status and showed a hazard ratio (HR) of 7.4 (95% CI 1.7 to 32.2) in the RF-positive group that had CRP level  $\geq 5$  mg/L compared with those with CRP  $\leq 4$  mg/L, whereas the RF-negative group had an HR of 1.5 (95% CI 0.5 to 4.5). A separate analysis in the same population showed an increased risk of death from cardiovascular causes in RF-positive women with a standardised mortality ratio of 2.02 (95% CI 1.15 to 3.28).<sup>16</sup> For that reason, further study of serological status as a potential predictor of CHD events and related death in a large population is warranted because both of these study populations were small and based upon <100 deaths.<sup>16</sup>

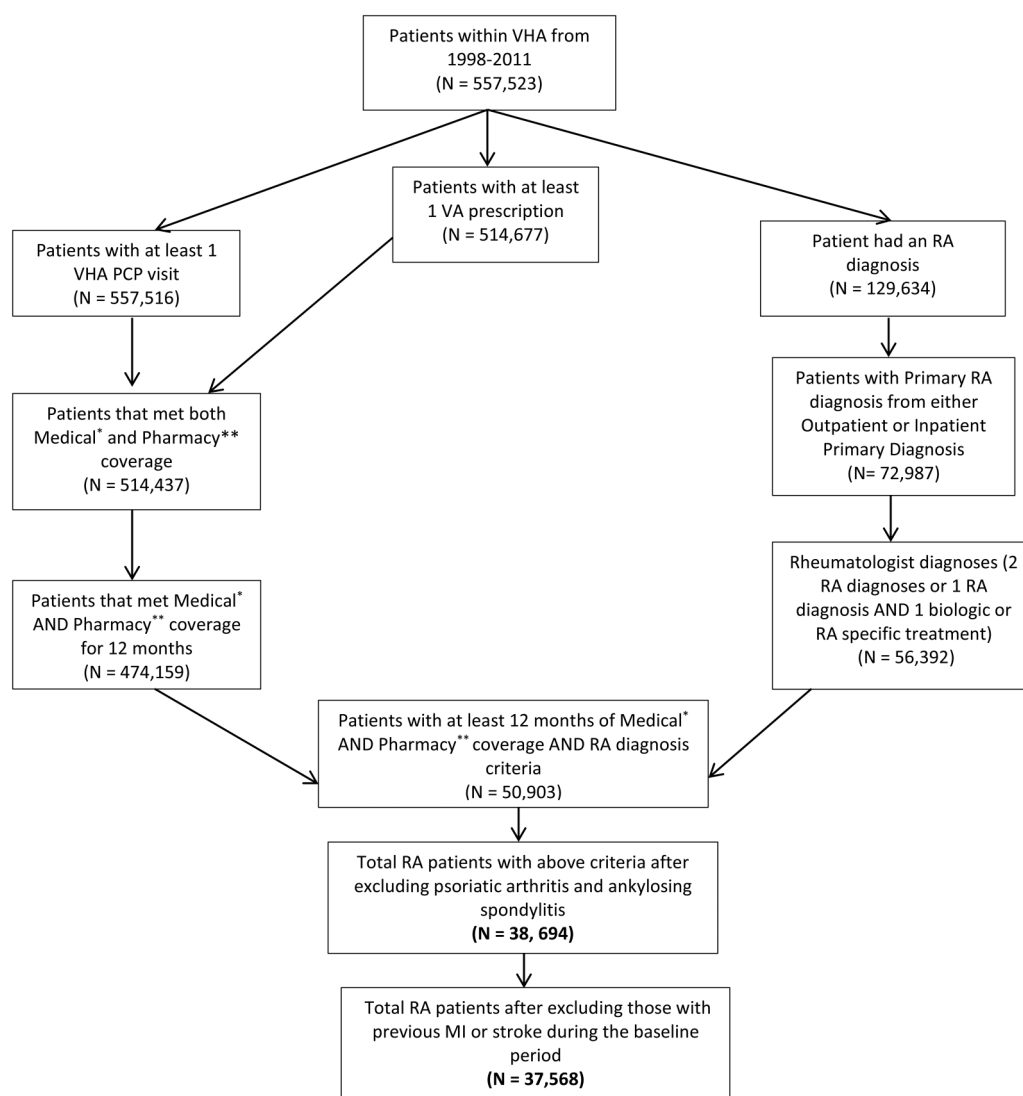
The objectives of this study were to examine, among patients with RA, the association between (1) total cholesterol, low-density lipoprotein cholesterol (LDL-C) and high-density lipoprotein-cholesterol (HDL-C); (2) CRP and ESR and (3) RA seropositivity with hospitalised MI, stroke and mortality from either MI or stroke.

**METHODS**

**Patients**

We identified a population of patients with RA using data from the Veterans Health Administration (VHA) from 1998 to 2011. The VHA system is the largest United States (US) integrated healthcare system consisting of 152 medical centres and nearly 1400 community-based outpatient clinics that provides care to retired members of the US military. The data were collected from the Decision Support System (DSS), Medical Statistical Analysis Software (MedSAS), Veterans Information System Technology Architecture (VistA) and the Veterans' Informatics, Information and Computing Infrastructure (VINCI). These electronic

databases are derived from the VHA's electronic medical record (EMR) and store longitudinal data of patients receiving care nationwide within the VHA. These data contained outpatient visits to primary care physicians and rheumatologists, hospitalisation within the VHA system, pharmacy data and laboratory values. The cohort of patients with RA was built using International Classification of Diseases (ICD), Ninth Revision (ICD-9) codes following a previously validated algorithm that required two or more physician diagnoses of RA by a VHA rheumatologist, or at least one physician diagnosis in conjunction with a medication that is reasonably specific for RA (eg, methotrexate, sulfasalazine, hydroxychloroquine, biological therapies and leflunomide).<sup>17</sup> The algorithm excludes patients who have a rheumatologist-diagnosed inflammatory arthritis other than RA (eg, psoriatic arthritis and ankylosing spondylitis) by ICD-9 diagnoses. To be eligible for this analysis, cohort members had to have at least 12 months of observability in VHA data prior to the start of follow-up and ongoing observability throughout the follow-up period. Observability in VHA data was



\*Medical coverage defined 1 physician visit followed by 14 months of repeated visits

\*\*Pharmacy coverage defines as 1 prescription followed by 5 months of prescription refills.

**Figure 1** Flow diagram of the rheumatoid arthritis (RA) population within the Veterans Health Administration (VHA) System. \*Medical coverage defined 1 physician visit followed by 14 months of repeated visits. \*\*Pharmacy coverage defines as 1 prescription followed by 5 months of prescription refills. MI, myocardial infarction; PCP, primary care physician.

defined as filling at least one prescription every 6 months and at least one annual visit with a VHA primary care physician. The 'index date' was defined as the date after which both RA cohort criteria and VHA observability were met according to the algorithm described above and anchored the start of follow-up. The 12 months preceding the index date constituted a baseline period, during which time fixed covariates were evaluated.

### Exposure

The main exposures of interest were LDL-C, HDL-C, CRP, ESR and anti-CCP/RF positivity. Exposures were all considered as time varying during follow-up and updated on a person-day basis. Each of these could occur during the 12-month baseline period, where the cohort was first defined, and these exposures were allowed to vary during follow-up. Serology was classified as seropositive (positive RF and/or anti-CCP) or seronegative (RF and anti-CCP-negative status). Patients with RA without serological tests available were considered as missing.

### Outcome

The outcomes of interest were the first hospitalised acute MI or stroke and fatal MI or stroke in the VHA during follow-up using validated algorithm developed for each outcome. MI was defined as hospitalisation with a primary or secondary discharge diagnosis ICD-9 code 410.x1.<sup>18–20</sup> Stroke was defined as primary or secondary discharge ICD-9 codes 433.x1, 434 (excluding 434.x0) or 436.<sup>21 22</sup> Inpatient death from MI or stroke was determined by a discharge disposition of death at the end of hospitalisation.

### Variables for the analysis

The variables for this study were obtained from the inpatient and outpatient DSS, MedSAS, VistA and VINCI as mentioned previously. These electronic databases are derived from the VHA's EMR and capture longitudinal data from patients receiving care nationwide within the VHA. The variables for this analysis included age, sex, hypertension, diabetes, congestive heart failure and chronic kidney disease diagnoses (determined by ICD-9 code), pharmacy data (RA medications, statins and steroids) and height and weight, which were used to calculate body mass index, all of which were characterised during the baseline period only. Geographically based Socioeconomic Status (SES) Index Score was determined. Median score for the US distribution was 50.5 in a scale 0–100; higher scores=higher SES.<sup>23</sup> Tobacco use was obtained from the VHA EMR Health Factors Data. This one is collected nationally using the clinical reminder process and are stored in the Health Factors tables within the VHA EMR databases.<sup>24</sup> Tobacco use was classified as current, former or never use. These data were time varying, but because the classification of tobacco use changed for so few people over time, tobacco use was modelled as a fixed covariate. Laboratory values (LDL-C, HDL-C, CRP and ESR) were time varying and updated throughout the follow-up period. RA serologies (RF and anti-CCP antibody status) were determined as positive if either or both were positive, negative if neither was positive or missing if neither was ever measured.

### Analysis plan

Age-specific and sex-specific event rates for the first MI, stroke or death from MI or stroke were computed with exposures divided in deciles. This was performed to understand the patterns of the main exposures of interest, particularly at the tail ends of exposure distribution. We then computed the age-adjusted incidence rate (IR) of hospitalised MI, stroke and

inpatient death from MI or stroke by controlling with the IR age distribution of the cohort. A linear model was used to test the IR trend, and a quadratic model was used to model those IR with a non-linear trend. Cox proportional hazards models using age as the time axis were used to determine the HR between LDL-C, HDL-C, CRP and ESR and first hospitalised MI, stroke or death from either. Separate models were constructed for each main exposure, modelled as time varying, while controlling for

**Table 1** Baseline characteristics of Veterans Health Administration rheumatoid arthritis cohort

Characteristic	Patients with RA (N=37 568)
Demographics and RA-related variables	
Age (years), mean (SD)	62.9 (12.1)
Male, %	90
Caucasian, %	71
Serology available, %	75
Seropositive, %*	69
Seronegative, %*	31
Erythrocyte sedimentation rate (mm/h), mean (SD)†	29.8 (26.2)
C reactive protein (mg/dL), mean (SD)†	1.8 (2.9)
Socioeconomic status (SES) Index Score, median (IQR)‡	50.7 (48.3–53.2)
Tobacco use, %	
Current	27.7
Former	41.0
Lifetime non-smoker	18.5
Missing tobacco use	12.8
Medications	
Prednisone or other oral steroids, %	66
Statins, %	30
Biologics§, %	21
DMARD including methotrexate, %	50
Non-biological DMARD other than methotrexate, %	29
Comorbidities	
Hypertension, %	33
Heart failure, %	3
Diabetes, %	12
Chronic obstructive pulmonary disease, %	9
Chronic kidney disease, %	1
Body mass index, median (IQR)	27.6 (24.4–31.2)
Lipid levels	
Total cholesterol (mg/dL), mean (SD)¶	181.2 (35.5)
HDL-C (mg/dL), mean (SD)¶	45.1 (12.9)
LDL-C (mg/dL), mean (SD)¶	108.2 (29.8)

\*Serological status was determined throughout the 12-month baseline period and throughout the entire follow-up. The remaining 25% of patients were classified as having missing serological status.

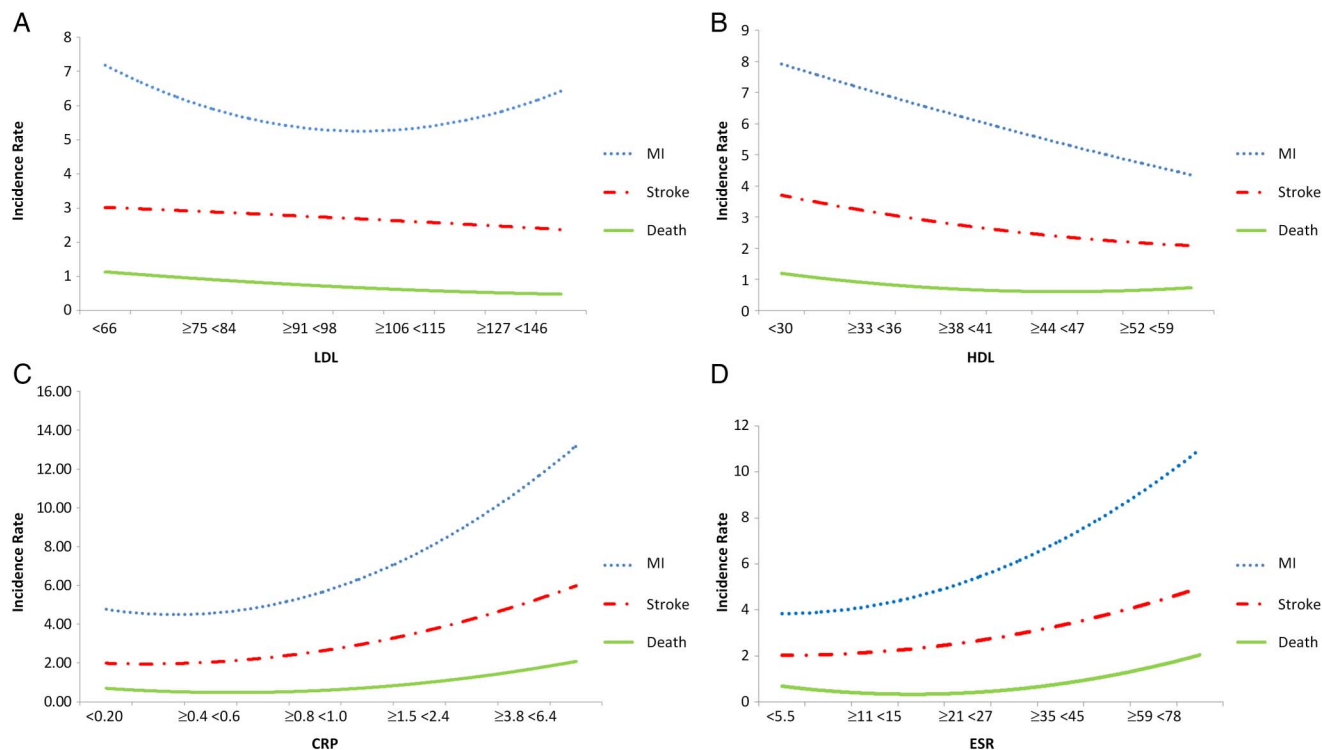
†Distribution of ESR and CRP was determined using the most recent laboratory value prior the index date; there were 46% non-missing values for ESR and 34% for CRP in the baseline period. Additional lab data were modelled in a time-varying way after the start of follow-up.

‡SES Index Score based on the Agency for Healthcare Research and Quality SES indicators report from 2008.<sup>23</sup> The range of this scale goes from 0 to 100 where higher scores represent higher SES status. Median distribution of SES index score for the US population is 50.5.

§Biological included all antitumor necrosis factor biologics, rituximab and abatacept as either monotherapy or combined with non-biological DMARD.

¶Distribution of total cholesterol, HDL-C and LDL-C was determined using the most recent laboratory value prior index date; there were 72% non-missing values for total cholesterol, 70% for HDL-C and 68% for LDL-C in the baseline period. Additional lab data were modelled in a time-varying way after the start of follow-up.

DMARD, disease-modifying antirheumatic drug; ESR, erythrocyte sedimentation rate; HDL-C, high-density lipoprotein cholesterol; LDL-C, low-density lipoprotein cholesterol; PO, oral; RA, rheumatoid arthritis.



**Figure 2** Incidence rate of myocardial infarction, stroke and death by CRP, ESR, LDL-C and HDL-C divided in deciles. CRP, C reactive protein; ESR, erythrocyte sedimentation rate; HDL-C, high-density lipoprotein cholesterol; LDL-C, low-density lipoprotein cholesterol; MI, myocardial infarction.

demographic characteristics. The exposure categories were divided into quintiles to allow for adequate numbers of event in multivariable-adjusted models. Two different approaches were used to control for statin use in the statistical model where the main exposure was LDL-C, since statins have a major effect on LDL-C. First, we controlled for statin use at baseline only while LDL-C was time variant. In the second approach, we only included patients who were not on statins at the index date, and individuals were then censored at the time that statins were initiated during follow-up. Regarding ESR and CRP, these were time varying and evaluated in separate models to avoid the expected high collinearity between these two laboratory tests. Given that RA seropositivity typically does not fluctuate much over time, this factor was as a fixed covariate assessed using all baseline and follow-up data.

## RESULTS

After applying relevant cohort inclusion criteria, 37 568 patients with RA were identified within the VHA system (figure 1). Ninety per cent were men with mean age 63.0 ( $\pm 12.1$  SD) years, and the mean age of women was 53.3 ( $\pm 13.8$  SD) years. Mean CRP, ESR, HDL-C and LDL-C levels at baseline were 1.8 mg/dL ( $\pm 3.0$  SD), 30.0 mm/h ( $\pm 26.1$  SD), 45.1 mg/dL ( $\pm 12.9$ ) and 106.1 mg/dL ( $\pm 30.6$  SD), respectively; 69% of patients with RA with serologies available were seropositive. Other baseline characteristics of patients are listed in table 1.

### Rates of first hospitalised MI, stroke or CHD death

Mean follow-up in the study was 4.5 ( $\pm$ SD 3.1) years. There were a total of 896 incident hospitalised MI, with an age-adjusted IR of 4.1 per 1000 person-year (95% CI 3.5 to 4.9). The age-adjusted IR among men was 5.9 per 1000 person-year (95% CI 5.5 to 6.3) and 2.9 per 1000 person-year (95% CI 2.1 to 4.0) among women. There were a total of 415

incident strokes, with an age-adjusted IR for men of 1.8 per 1000 person-years (95% CI 1.2 to 2.7) and 2.7 per 1000 person-years (95% CI 2.4 to 3.0) among women. There were 122 inpatient deaths from either MI or stroke with an age-adjusted IR of 0.07 per 1000 person-years (95% CI 0.05 to 0.08) for men and 0.09 per 1000 person-years (95% CI 0.05 to 0.17) for women.

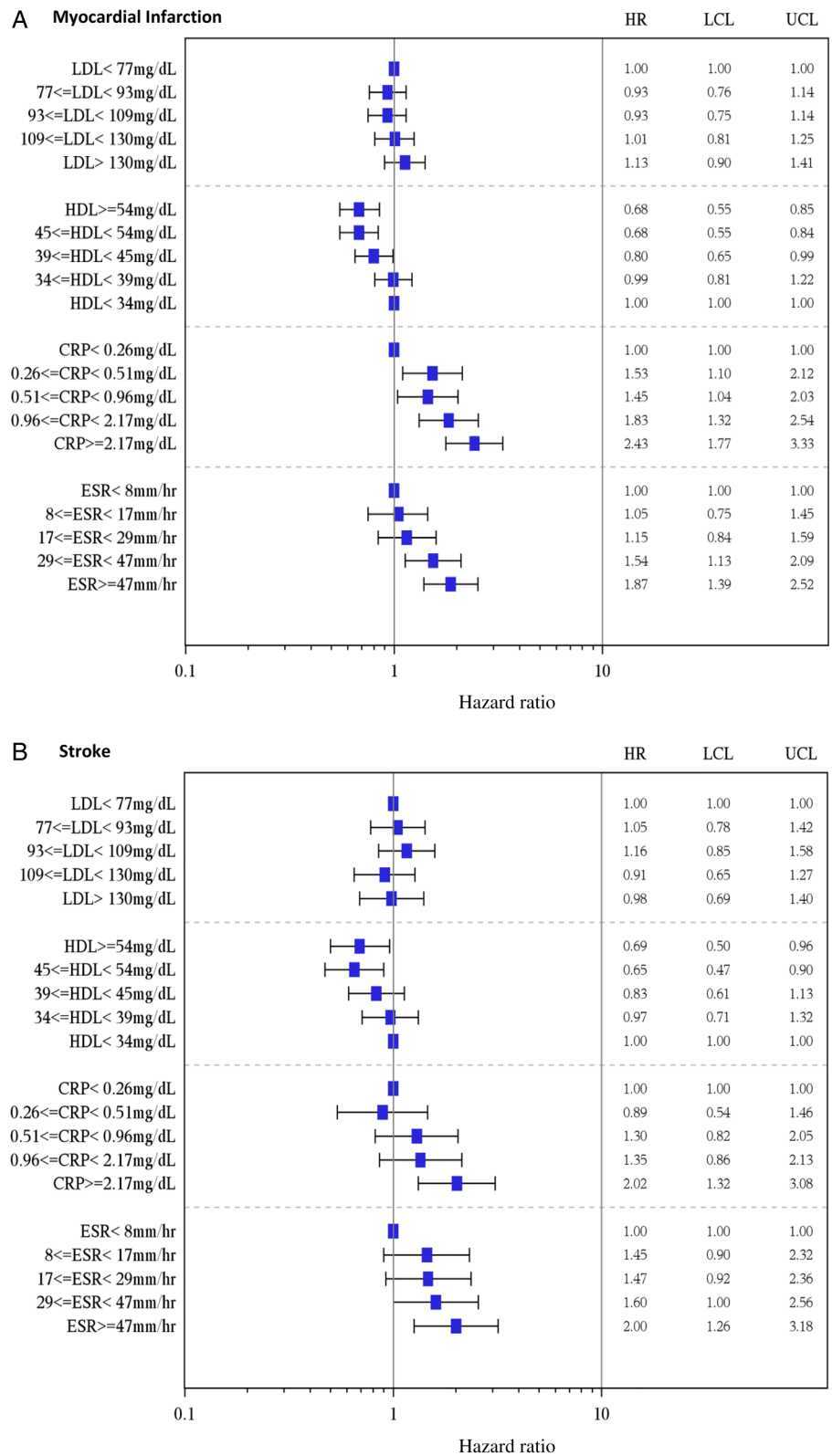
Figure 2 shows the IR for each outcome by exposure divided in deciles. We observed a non-linear U-shaped trend between LDL-C and MI risk. There was no trend between the IR of stroke and LDL-C and HDL-C and CHD death. The remainder of the trends of the IRs was linear. The IR for each of the outcomes decreased as HDL-C increased; these were the opposite for CRP and ESR, where the IR for the outcomes was higher as CRP and ESR increased (figure 2).

### Multivariable COX regression analysis

After multivariable adjustment, Cox proportional hazard models using LDL-C as the main exposure of interest and after controlling for statins at baseline showed no clear association between LDL-C and the risk for MI or stroke (figure 3). There were no differences in HR in the sensitivity analysis used to control for statins which included only patients who were not taking statins at baseline with subsequent censoring if statins were initiated (data not shown). High HDL-C levels were associated with reduced risk for MI and stroke (figure 3A, B).

Cox proportional hazards models using CRP or ESR as the main exposure demonstrated that there was a monotonic association between high CRP and ESR with the risk of MI and stroke (figure 3A, B). After multivariable adjustment, RA seropositivity was associated with MI (table 2). LDL-C, HDL-C, CRP and ESR were not associated with increased risk of death from MI or stroke (data not shown).

**Figure 3** Adjusted hazard ratios (HRs)\* of hospitalised myocardial infarction (MI) or stroke among patients with rheumatoid arthritis from the Veterans Health Administration. (A) Myocardial infarction. (B) Stroke. Note: The exposures were divided into quintiles. CRP, C reactive protein; ESR, erythrocyte sedimentation rate; HDL, high-density lipoprotein; LDL, low-density lipoprotein; LCL, lower 95% confidence level; UCL, upper 95% confidence level.



**DISCUSSION**

In this US veteran and predominantly male RA cohort, higher levels of ESR and CRP were associated with increased risk for MI and stroke, and higher levels of HDL-C were inversely associated with MI and stroke. None of these were significantly associated with CHD death, although mortality endpoints were likely underpowered. There was no clear association between LDL-C and the risk of MI, stroke or death. However, LDL-C IR

was observed to have a non-linear U-shape association with MI. RA seropositivity was associated with an increased risk for MI.

Myasoedova *et al*<sup>5</sup> previously reported that patients with RA experienced higher rates of MI compared with the non-RA population at lower levels of LDL-C.<sup>5</sup> Our study did not identify clear association between LDL-C with MI or stroke. One of the differences between that study and ours is that the previous study had a small sample size (N=651, with 62 events),<sup>5</sup>

**Table 2** HRs for myocardial infarction associated with factors controlled in the multivariate Cox models\*

	HR	95% CI
Male	1.39	0.98 to 1.99
Socioeconomic status (SES)	0.97	0.95 to 0.99
Seropositive (referent to seronegative)	1.23	1.03 to 1.48
Missing serology (referent to seronegative)	1.30	1.05 to 1.59
Current smoker (referent to never smoker)	1.42	1.14 to 1.77
Former smoker (referent to never smoker)	1.08	0.89 to 1.31
Missing smoking data (referent to never smoker)	1.72	1.26 to 2.34
Steroids 1–7.5 mg/day (ref to no use)†	1.32	1.13 to 1.54
Steroids >7.5 mg/day (ref to no use)†	1.75	1.42 to 2.15
Statin	1.43	1.24 to 1.65
Methotrexate (MTX)+DMARD (ref to non-biological DMARD other than MTX)	0.83	0.65 to 1.00
Biologics‡ (ref to non-biological DMARD other than MTX)	0.82	0.65 to 1.05
No RA medication (no biological, no DMARD; ref to non-biological DMARD other than MTX)	0.87	0.72 to 1.06
Chronic obstructive pulmonary disease	1.54	1.27 to 1.86
Chronic kidney disease	2.30	1.60 to 3.32
Diabetes mellitus	1.76	1.48 to 2.09
Heart failure	1.71	1.28 to 2.28
Hypertension	1.06	0.92 to 1.23

Note: These are the covariates controlled for in the adjusted Cox models (HRs) models depicted in figure 2.

\*Models also controlled for body mass index, but not statistically significant.

Comorbidities determined and controlled for at baseline.

†Steroid dose calculated as the mean daily dose during the 6 months prior to the index date.

‡Biological included all antitumor necrosis factor biologics, rituximab and abatacept with or without non-biological DMARD.

DMARD, disease-modifying antirheumatic drug; RA, rheumatoid arthritis.

whereas our study population had more than 38 000 patients with a total of 896 incident MI, 415 strokes and 122 deaths from MI or stroke. Another difference is that the Myasoedova *et al* study was conducted largely in a prebiological era in a more restricted racial/ethnic subgroup of individuals living in Olmstead County, an almost exclusively Caucasian demographic group. Similar to the results of our study between MI IR and LDL-C, a recent analysis of a large database using insurance claims data of a population composed predominantly by women (76% women; N=35 330) did show a marginal non-linear association between LDL-C and MI but no association between LDL-C and stroke or death from MI or stroke.<sup>25</sup>

One study found an association between CRP and the development of atherosclerosis among patients with RA<sup>14</sup> and another one showed that CRP was associated with MI death in patients with RA.<sup>13</sup> Although CRP was used only at baseline in both of these studies and not as a time-variant exposure, these data are important in the explanation of the high burden of CHD among patients with RA. A recent small study (N=651) analysed this association using CRP and ESR in a time-variant fashion and yielded similar results to ours, but the data on CRP were limited given that only 20% of the population had CRP measurement.<sup>5</sup> Despite the limitation of these studies regarding the use of CRP only at baseline or small sample size, our study was able to analyse CRP in a time-variant manner with a large sample and showed a significant association between CRP and ESR with the risk for MI and stroke.

Seropositivity defined as either positive RF or anti-CCP has been found to be associated with increased CHD in patients with RA in previous studies.<sup>5 26</sup> Seropositivity with either positive RF or anti-CCP or antinuclear antibodies had been

associated with higher mortality from CHD even in patients without articular symptoms.<sup>27 28</sup> This comparison of autoantibody-positive RA to autoantibody-negative RA is relevant given that the genetic contribution of HLA-DRB1 shared epitope is restricted to autoantibody-positive RA,<sup>29 30</sup> which had also been associated with higher cardiovascular mortality rate.<sup>31</sup> Like the aforementioned studies, our study showed an association between seropositivity and MI risk. This evidence in combination with our results suggests that, seropositive status may have an independent effect that may affect risk for CHD.

This study has several strengths that include a large cohort of patients with RA, which provides large power for the examination of the associations analysed in this study. We also found significant and expected associations with a number of comorbidities that have been commonly found to be CHD risk factors in past studies and in CHD risk calculators.<sup>32</sup> Another strength of this study is the availability of serological status which was useful in two ways: one, it increased the specificity of the algorithm already used to identify patients with RA within this cohort, and it allowed us to analyse the association between seropositivity and CHD in patients with RA. The cohort also had readily available data on inflammatory markers such as CRP and ESR which provided for time-variant analyses of these inflammatory markers. Using EHR-based data sources from the VHA, our study was able to determine tobacco use, a major CHD risk factor and a potential confounder, which is usually not available in analyses of large databases of insurance claims data.

Among the limitations of the study is that we did not have direct information on RA disease activity based upon clinical examination. However, we had inflammatory markers as the surrogate marker of disease activity in these patients. We also recognise that the specificity of these markers may be low to reflect only RA and these lab tests may be elevated regardless of the cause of inflammation. Another limitation of our study is that we could not control for RA disease duration, which has been associated with increased risk for MI in patients with RA.<sup>33–35</sup> However, two recent studies found no association between RA disease duration and CHD events.<sup>36 37</sup> Given this mixed evidence, not having disease duration information, therefore, may not represent a major limitation to our study. Finally, we were able to characterise tobacco use in the majority of our cohort, but 12% of the population had missing data for tobacco use.

This study is one of the few that examined CHD risk factors in a large RA population (composed predominantly of older men) in which traditional risk factors such as LDL-C and inflammation were examined as additional risk factors for CHD. Future directions in RA suggest the continued need to develop better tools to predict future CHD risk in patients with RA based on lipid levels and other CHD-related risk factors. This could take the form of recalibrating existing CHD risk models derived in the general population, adding RA as a risk factor. Alternatively, it may be that representing RA simply as a single factor in this model still yields suboptimal calibration and discrimination, and an RA-specific CHD risk calculator will, therefore, be necessary. Regardless of which of these two approaches is ultimately best, further studies are needed to determine whether CRP or ESR levels meaningfully improve CHD risk stratification and prediction for patients with RA.

**Contributors** All authors contributed to the conception and design, or analysis and interpretation of data, drafting the article or revising it critically for important intellectual content and final approval of the version to be published.

**Funding** This work was supported by the Agency for Healthcare Research and Quality (AHRQ) (R01HS018517). Dr Curtis receives support from the NIH (AR 053351). Dr Navarro-Millán received support from the Arthritis Foundation (5561) and NIH (R01 AR062376-S1).

**Competing interests** JRC received consulting fees and research grants from Amgen, Abbott, BMS, Pfizer, Eli Lilly, Janssen, UCB, Roche/Genentech and CORRONA. INM has nothing to disclose.

**Ethics approval** IRB of Veteran Health Affairs Birmingham VA and University of Alabama at Birmingham.

**Provenance and peer review** Not commissioned; externally peer reviewed.

**Open Access** This is an Open Access article distributed in accordance with the Creative Commons Attribution Non Commercial (CC BY-NC 4.0) license, which permits others to distribute, remix, adapt, build upon this work non-commercially, and license their derivative works on different terms, provided the original work is properly cited and the use is non-commercial. See: <http://creativecommons.org/licenses/by-nc/4.0/>

## REFERENCES

- Solomon DH, Goodson NJ, Katz JN, *et al.* Patterns of cardiovascular risk in rheumatoid arthritis. *Ann Rheum Dis* 2006;65:1608–12.
- Meune C, Touze E, Trinquart L, *et al.* Trends in cardiovascular mortality in patients with rheumatoid arthritis over 50 years: a systematic review and meta-analysis of cohort studies. *Rheumatology (Oxford)* 2009;48:1309–13.
- Wolfe F, Freundlich B, Straus WL. Increase in cardiovascular and cerebrovascular disease prevalence in rheumatoid arthritis. *J Rheumatol* 2003;30:36–40.
- Gonzalez A, Maradit Kremers H, Crowson CS, *et al.* The widening mortality gap between rheumatoid arthritis patients and the general population. *Arthritis Rheum* 2007;56:3583–7.
- Myasoedova E, Crowson CS, Kremers HM, *et al.* Lipid paradox in rheumatoid arthritis: the impact of serum lipid measures and systemic inflammation on the risk of cardiovascular disease. *Ann Rheum Dis* 2011;70:482–7.
- Semb AG, Kvien TK, Aastveit AH, *et al.* Lipids, myocardial infarction and ischaemic stroke in patients with rheumatoid arthritis in the Apolipoprotein-related Mortality RISK (AMORIS) Study. *Ann Rheum Dis* 2010;69:1996–2001.
- del Rincon I, Freeman GL, Haas RW, *et al.* Relative contribution of cardiovascular risk factors and rheumatoid arthritis clinical manifestations to atherosclerosis. *Arthritis Rheum* 2005;52:3413–23.
- del Rincon ID, Williams K, Stern MP, *et al.* High incidence of cardiovascular events in a rheumatoid arthritis cohort not explained by traditional cardiac risk factors. *Arthritis Rheum* 2001;44:2737–45.
- Gonzalez A, Maradit Kremers H, Crowson CS, *et al.* Do cardiovascular risk factors confer the same risk for cardiovascular outcomes in rheumatoid arthritis patients as in non-rheumatoid arthritis patients? *Ann Rheum Dis* 2008;67:64–9.
- Ridker PM, Danielson E, Fonseca FA, *et al.* Reduction in C-reactive protein and LDL cholesterol and cardiovascular event rates after initiation of rosuvastatin: a prospective study of the JUPITER trial. *Lancet* 2009;373:1175–82.
- Robertson J, Peters MJ, McInnes IB, *et al.* Changes in lipid levels with inflammation and therapy in RA: a maturing paradigm. *Nat Rev Rheumatol* 2013;9:513–23.
- Navarro-Millán I, Charles-Schoeman C, Yang S, *et al.* Changes in lipoproteins associated with methotrexate or combination therapy in early rheumatoid arthritis: results from the treatment of early rheumatoid arthritis trial. *Arthritis Rheum* 2013;65:1430–8.
- Goodson NJ, Symmons DP, Scott DG, *et al.* Baseline levels of C-reactive protein and prediction of death from cardiovascular disease in patients with inflammatory polyarthritis: a ten-year followup study of a primary care-based inception cohort. *Arthritis Rheum* 2005;52:2293–9.
- Gonzalez-Gay MA, Gonzalez-Juanatey C, Pineiro A, *et al.* High-grade C-reactive protein elevation correlates with accelerated atherogenesis in patients with rheumatoid arthritis. *J Rheumatol* 2005;32:1219–23.
- McDermott DH, Yang Q, Kathiresan S, *et al.* CCL2 polymorphisms are associated with serum monocyte chemoattractant protein-1 levels and myocardial infarction in the Framingham Heart Study. *Circulation* 2005;112:1113–20.
- Goodson NJ, Wiles NJ, Lunt M, *et al.* Mortality in early inflammatory polyarthritis: cardiovascular mortality is increased in seropositive patients. *Arthritis Rheum* 2002;46:2010–9.
- Singh JA, Holmgren AR, Noorbaloochi S. Accuracy of veterans administration databases for a diagnosis of rheumatoid arthritis. *Arthritis Rheum* 2004;51:952–7.
- Kiyota Y, Schneeweiss S, Glynn RJ, *et al.* Accuracy of Medicare claims-based diagnosis of acute myocardial infarction: estimating positive predictive value on the basis of review of hospital records. *Am Heart J* 2004;148:99–104.
- Metcalfe A, Neudam A, Forde S, *et al.* Case definitions for acute myocardial infarction in administrative databases and their impact on in-hospital mortality rates. *Health Serv Res* 2013;48:290–318.
- Cutrona SL, Toh S, Iyer A, *et al.* Validation of acute myocardial infarction in the Food and Drug Administration's Mini-Sentinel program. *Pharmacoepidemiol Drug Saf* 2013;22:40–54.
- Roumie CL, Mitchel E, Gideon PS, *et al.* Validation of ICD-9 codes with a high positive predictive value for incident strokes resulting in hospitalization using Medicaid health data. *Pharmacoepidemiol Drug Saf* 2008;17:20–6.
- Tirschwell DL, Longstreth WT Jr. Validating administrative data in stroke research. *Stroke* 2002;33:2465–70.
- (AHRQ) AfHRAQ. *Creation of New Race-Ethnicity Codes and Socioeconomic Status (SES) Indicators for Medicare Beneficiaries 2008*. 2008.
- McGinnis KA, Brandt CA, Skanderson M, *et al.* Validating smoking data from the Veteran's Affairs Health Factors dataset, an electronic data source. *Nicotine Tob Res* 2011;13:1233–9.
- Zhang J, Chen L, Delzell E, *et al.* The association between inflammatory markers, serum lipids and the risk of cardiovascular events in patients with rheumatoid arthritis. *Ann Rheum Dis* 2014;73:1301–8.
- Lopez-Longo FJ, Oliver-Minarro D, de la Torre I, *et al.* Association between anti-cyclic citrullinated peptide antibodies and ischemic heart disease in patients with rheumatoid arthritis. *Arthritis Rheum* 2009;61:419–24.
- Liang KP, Kremers HM, Crowson CS, *et al.* Autoantibodies and the risk of cardiovascular events. *J Rheumatol* 2009;36:2462–9.
- Tomasson G, Aspelund T, Jonsson T, *et al.* Effect of rheumatoid factor on mortality and coronary heart disease. *Ann Rheum Dis* 2010;69:1649–54.
- Gonzalez-Gay MA, Hajeer AH, Dababneh A, *et al.* Seronegative rheumatoid arthritis in elderly and polymyalgia rheumatica have similar patterns of HLA association. *J Rheumatol* 2001;28:122–5.
- Ronninger M, Seddighzadeh M, Eike MC, *et al.* Interaction analysis between HLA-DRB1 shared epitope alleles and MHC class II transactivator CIITA gene with regard to risk of rheumatoid arthritis. *PLoS ONE* 2012;7:e32861.
- Farragher TM, Goodson NJ, Naseem H, *et al.* Association of the HLA-DRB1 gene with premature death, particularly from cardiovascular disease, in patients with rheumatoid arthritis and inflammatory polyarthritis. *Arthritis Rheum* 2008;58:359–69.
- Hippisley-Cox J, Coupland C, Vinogradova Y, *et al.* Predicting cardiovascular risk in England and Wales: prospective derivation and validation of QRISK2. *BMJ* 2008;336:1475–82.
- Peters MJ, Symmons DP, McCarey D, *et al.* EULAR evidence-based recommendations for cardiovascular risk management in patients with rheumatoid arthritis and other forms of inflammatory arthritis. *Ann Rheum Dis* 2010;69:325–31.
- Ward MM. Recent improvements in survival in patients with rheumatoid arthritis: better outcomes or different study designs? *Arthritis Rheum* 2001;44:1467–9.
- Naz SM, Farragher TM, Bunn DK, *et al.* The influence of age at symptom onset and length of followup on mortality in patients with recent-onset inflammatory polyarthritis. *Arthritis Rheum* 2008;58:985–9.
- Semb AG, Holme I, Kvien TK, *et al.* Intensive lipid lowering in patients with rheumatoid arthritis and previous myocardial infarction: an explorative analysis from the incremental decrease in endpoints through aggressive lipid lowering (IDEAL) trial. *Rheumatology (Oxford)* 2011;50:324–9.
- Arts EE, Fransen J, den Broeder AA, *et al.* The effect of disease duration and disease activity on the risk of cardiovascular disease in rheumatoid arthritis patients. *Ann Rheum Dis* 2015;74:998–1003.

**Appendix: Unadjusted Incidence Rates for Hospitalized MI Stratified by levels of Inflammatory Markers and Lipid Levels and by Gender**

	All				Female				Male			
	# Event	# Person-years (PY)	Incidence Rate (IR) per 1,000 PYs	p-Trend	# Event	# PY	IR per 1,000 PYs	p-Trend	# Event	# PY	IR per 1,000 PYs	p-Trend
<b>LDL-cholesterol (mg/dL)</b>	<b>N=560</b>											
<100	288	80512.45	3.6(3.2-4.0)	0.69	5	5913.97	1.2(0.7-1.9)	0.70	283	74598.48	3.8(3.4-4.2)	0.47
≥100 <130	169	48001.96	3.5(3.0-4.1)		9	5107.01	1.2(0.7-1.9)		160	42894.95	3.8(3.3-4.4)	
≥130 <160	65	20527.43	3.2(2.5-4.0)		3	2471.77	1.1(0.7-1.8)		62	18055.65	3.5(2.7-4.4)	
≥160	38	6733.90	5.6(4.1-7.8)		1	1082.35	2.0(1.2-3.5)		37	5651.55	6.3(4.6-8.7)	
<b>HDL-cholesterol (mg/dL)</b>	<b>N=568</b>											
≥60	50	21175.35	2.4(1.8-3.1)	<0.0001	6	4675.83	1.1(0.6-1.7)		44	16499.52	2.7(2.1-3.6)	
≥50 <59	74	25747.01	2.9(2.3-3.6)		3	3589.74	1.2(0.7-2.0)		71	22157.27	3.1(2.5-4.0)	
≥40 <50	148	46538.45	3.2(2.7-3.7)		3	4005.02	1.3(0.8-2.1)		145	42533.43	3.4(2.9-3.9)	
<40	296	64162.84	4.6(4.1-5.2)		7	2444.57	1.8(1.1-2.9)		0.34	289	61718.27	
<b>CRP (mg/dL)</b>	<b>N=334</b>											
≤0.34	60	25242.73	3.3(2.6-4.1)	<0.0001	6	2791.50	1.2(0.7-2.2)	0.35	54	22451.23	3.5(2.8-4.4)	<0.0001
> 0.34 ≤0.71	81	24783.99	3.7(3.0-4.6)		4	2769.48	1.4(0.8-2.5)		77	22014.52	4.0(3.2-4.9)	
>0.714 ≤1.8	86	23115.69	2.4(1.8-3.1)		1	2462.57	0.9(0.5-1.6)		85	20653.12	2.6(2.0-3.3)	
>1.8	107	20570.28	5.2(4.3-6.3)		1	1544.86	1.9(1.0-3.4)		106	19025.42	5.5(4.5-6.6)	
<b>ESR (mm/hr)</b>	<b>N=346</b>											
≤ 10	78	29900.25	3.0(2.4-3.8)	<0.0001	0	2174.92	1.0(0.5-1.8)	0.03	78	27725.33	3.3(2.6-4.1)	<0.0001
>10 ≤ 22	76	25110.13	3.6(2.9-4.5)		3	2944.22	1.2(0.4-2.1)		73	22165.91	4.0(3.2-4.9)	
>22 ≤42	90	24858.49	2.6(2.1-3.3)		4	3188.53	0.8(0.4-1.5)		86	21669.95	2.7(2.2-3.4)	
>42	102	21376.23	4.8(3.9-5.8)		5	2282.79	1.5(0.9-2.8)		97	19093.43	5.2(4.2-6.3)	
<b>Serologic Status</b>	<b>N=597</b>											
Seronegative	111	41174.52	2.7(2.2-3.2)		7	5180.34	0.9(0.6-1.5)		104	35994.18	2.9(2.4-3.6)	
Seropositive	313	89646.87	3.5(3.1-3.9)		9	8038.87	1.2(0.8-1.9)		304	81608.01	3.7(3.3-4.2)	
No Serology	173	42720.51	4.0(3.5-4.7)		3	3374.39	1.4(0.9-2.2)		170	39346.11	4.3(3.7-5.0)	

Note: LDL and HDL stratified per Adult Treatment Panel (ATP) III guidelines; CRP and ESR stratified by quartiles. MI = myocardial infarction; ESR = erythrocyte sedimentation rate; CRP = C-reactive protein; LDL = low density lipoprotein; HDL = high density lipoprotein; IR = incident rate; Seropositive = rheumatoid factor and/or anti-cyclic citrullinated peptide positive; Seronegative = both tests negative.



## Inflammation raises the risk of heart attack and stroke in people with rheumatoid arthritis



CrossMark

Coronary heart disease is a common cause of death in people with rheumatoid arthritis, and may be linked to systemic inflammation.

### INTRODUCTION

Rheumatoid arthritis is a chronic inflammatory disease that affects a person's joints, causing pain and disability. Patients with rheumatoid arthritis often have a higher risk of developing cardiovascular diseases such as coronary heart disease, stroke or heart attack. This is because the inflammation involved in rheumatoid arthritis can have an effect on other systems in the body, as well as the joints.

### WHAT DID THE AUTHORS HOPE TO FIND?

The authors hoped to work out the role that risk factors such as cholesterol and inflammation play in people with rheumatoid arthritis. Because inflammation is a key feature of rheumatoid arthritis, understanding how it contributes to the development of cardiovascular diseases is important.

### WHO WAS STUDIED?

The study looked at data from almost 40,000 people with rheumatoid arthritis being looked after by the Veterans Health Administration (VHA) in the United States. The VHA system is made up of 152 medical centres and nearly 1400 outpatient clinics that provide care to retired members of the United States military. Most of the patients were men over the age of 60.

### HOW WAS THE STUDY CONDUCTED?

This was a retrospective observational study, which means that the authors used the VHA database of electronic medical records to look back and find people diagnosed with or treated for rheumatoid arthritis over the past 12 years. There was no interventional treatment given. The authors used the data to work out which factors increased the risk for developing a heart attack or stroke.

### WHAT WERE THE MAIN FINDINGS OF THE STUDY?

Many of the people included in the study had cardiovascular risk factors. One-third had high blood pressure, and two-thirds had a history of smoking. The main finding was that raised levels of some markers of inflammation in the blood were linked to a risk of suffering from a heart attack or stroke. Although cholesterol is often found to be a risk factor for heart attacks, in this study it did not appear to be the most important contributing factor. There were no clear results for the risks for people with high levels of low-density lipoprotein (LDL, or 'bad' cholesterol), but the authors found that patients with high levels of high-density lipoprotein (HDL, or 'good' cholesterol) might be protected from heart attacks and strokes. A person's serologic status (meaning the presence of auto-antibodies such as rheumatoid factor) was also linked with an increased risk for heart attack and stroke. Overall, the amount of inflammation was the most important risk factor in people with rheumatoid arthritis suffering from a heart attack or stroke.

### ARE THESE FINDINGS NEW?

These findings are not new, but this is the first time that these effects have been shown in such a large group of people. Overall, they agree with the results of past studies that had smaller numbers of patients.

### HOW RELIABLE ARE THE FINDINGS?

One of the limitations of this study was a lack of information on each person's disease activity (severity). It would have been useful to have had clinical information such as the number of swollen joints and the length of time since diagnosis for each person. Instead, the authors used information from laboratory tests to estimate disease activity. Also, although this study recorded the smoking status for most patients, this information was missing for approximately 12% of people in the database. Smoking is a major risk factor for cardiovascular disease, and it would have been useful to have been able to include this information for everyone. Finally, because the study was mainly made up of men, the results may not be applicable to all patients with rheumatoid arthritis. However, given the very large numbers of people included, the authors are confident that the findings are reliable.

### WHAT DO THE AUTHORS PLAN ON DOING WITH THIS INFORMATION?

The authors are carrying out more studies. They hope that these will help to develop ways to encourage doctors to use treat-to-target guidelines, which recommend that doctors treat patients with the goal of achieving remission or low disease activity. Remission can lead to decreased inflammation and therefore also a decrease in cardiovascular risk.

### WHAT DOES THIS MEAN FOR ME?

These results highlight that rheumatoid arthritis is a systemic disease which does not just affect a person's joints. If you have rheumatoid arthritis, or are caring for someone with the disease, it is important that you are aware of the possible complications. You can take steps to reduce your cardiovascular risk factors. People with rheumatoid arthritis should not smoke, and should try to maintain their weight at a healthy level. This will help to minimise the risk of developing cardiovascular diseases such as stroke or heart attack. You should talk to your doctor about ways to treat your rheumatoid arthritis to achieve remission or low disease activity.

**Disclaimer:** This is a summary of a scientific article written by a medical professional ("the Original Article"). The Summary is written to assist non medically trained readers to understand general points of the Original Article. It is supplied "as is" without any warranty. You should note that the Original Article (and Summary) may not be fully relevant nor accurate as medical science is constantly changing and errors can occur. It is therefore very important that readers not rely on the content in the Summary and consult their medical professionals for all aspects of their health care and only rely on the Summary if directed to do so by their medical professional. Please view our full Website Terms and Conditions. <http://www.bmj.com/company/legal-information/>

Date prepared: February 2016

Summary based on research article published on: 21 January 2015

**From:** Navarro-Millán, I. *et al.* Association of hyperlipidaemia, inflammation and serological status and coronary heart disease among patients with rheumatoid arthritis: data from the National Veterans Health Administration. *Ann Rheum Dis* 2016;75:341–47. doi:10.1136/annrheumdis-2013-204987

Copyright © 2016 BMJ Publishing Group Ltd & European League Against Rheumatism. Medical professionals may print copies for their and their patients and students non commercial use. Other individuals may print a single copy for their personal, non commercial use. For other uses please contact our [Rights and Licensing Team](#).

### FURTHER READING

- 1 Smolen J, *et al.* Treating rheumatoid arthritis to target: 2014 update of the recommendations of an international task force. *Ann Rheum Dis* 2016;75:3–15.
- 2 Peters M, *et al.* EULAR evidence-based recommendations for cardiovascular risk management in patients with rheumatoid arthritis and other forms of inflammatory arthritis. *Ann Rheum Dis* 2010;69:325–31.