



OPEN ACCESS

EPIDEMIOLOGICAL SCIENCE

Genome-wide association study revealed novel loci which aggravate asymptomatic hyperuricaemia into gout

Yusuke Kawamura,^{1,2} Hirofumi Nakaoka,³ Akiyoshi Nakayama,^{1,4} Yukinori Okada,^{5,6,7} Ken Yamamoto,⁸ Toshihide Higashino,¹ Masayuki Sakiyama,^{1,9} Toru Shimizu,^{10,11} Hiroshi Ooyama,¹² Keiko Ooyama,¹² Mitsuo Nagase,¹³ Yuji Hidaka,¹⁴ Yuko Shirahama,⁸ Kazuyoshi Hosomichi,¹⁵ Yuichiro Nishida,¹⁶ Ippei Shimoshikiryo,¹⁷ Asahi Hishida,¹⁸ Sakurako Katsuura-Kamano,¹⁹ Seiko Shimizu,¹ Makoto Kawaguchi,^{1,20} Hirokazu Uemura,¹⁹ Rie Ibusuki,¹⁷ Megumi Hara,¹⁶ Mariko Naito,^{18,21} Mikiya Takao,^{1,22} Mayuko Nakajima,¹ Satoko Iwasawa,²³ Hiroshi Nakashima,²³ Keizo Ohnaka,²⁴ Takahiro Nakamura,²⁵ Blanka Stiburkova,^{26,27} Tony R Merriman,²⁸ Masahiro Nakatochi,²⁹ Sahoko Ichihara,³⁰ Mitsuhiro Yokota,³¹ Tappei Takada,³² Tatsuya Saitoh,^{33,34} Yoichiro Kamatani,^{6,35} Atsushi Takahashi,^{6,36} Kokichi Arisawa,¹⁹ Toshiro Takezaki,¹⁷ Keitaro Tanaka,¹⁶ Kenji Wakai,¹⁸ Michiaki Kubo,³⁷ Tatsuo Hosoya,^{38,39} Kimiyoshi Ichida,^{38,40} Ituro Inoue,³ Nariyoshi Shinomiya,¹ Hirotaka Matsuo¹

Handling editor Josef S Smolen

► Additional material is published online only. To view please visit the journal online (<http://dx.doi.org/10.1136/annrheumdis-2019-215521>).

For numbered affiliations see end of article.

Correspondence to

Dr Hirotaka Matsuo, Department of Integrative Physiology and Bio-Nano Medicine, National Defense Medical College, Tokorozawa, Saitama 359-8513, Japan; hmatsuo@ndmc.ac.jp

YK, HN, AN, YO and KY contributed equally.

Received 9 April 2019
Revised 20 May 2019
Accepted 21 May 2019
Published Online First 8 July 2019



© Author(s) (or their employer(s)) 2019. Re-use permitted under CC BY. Published by BMJ.

To cite: Kawamura Y, Nakaoka H, Nakayama A, et al. *Ann Rheum Dis* 2019;**78**:1430–1437.

ABSTRACT

Objective The first ever genome-wide association study (GWAS) of clinically defined gout cases and asymptomatic hyperuricaemia (AHUA) controls was performed to identify novel gout loci that aggravate AHUA into gout.

Methods We carried out a GWAS of 945 clinically defined gout cases and 1003 AHUA controls followed by 2 replication studies. In total, 2860 gout cases and 3149 AHUA controls (all Japanese men) were analysed. We also compared the ORs for each locus in the present GWAS (gout vs AHUA) with those in the previous GWAS (gout vs normouricaemia).

Results This new approach enabled us to identify two novel gout loci (rs7927466 of *CNTN5* and rs9952962 of *MIR302F*) and one suggestive locus (rs12980365 of *ZNF724*) at the genome-wide significance level ($p < 5.0 \times 10^{-8}$). The present study also identified the loci of *ABCG2*, *ALDH2* and *SLC2A9*. One of them, rs671 of *ALDH2*, was identified as a gout locus by GWAS for the first time. Comparing ORs for each locus in the present versus the previous GWAS revealed three 'gout vs AHUA GWAS'-specific loci (*CNTN5*, *MIR302F* and *ZNF724*) to be clearly associated with mechanisms of gout development which distinctly differ from the known gout risk loci that basically elevate serum uric acid level.

Conclusions This meta-analysis is the first to reveal the loci associated with crystal-induced inflammation, the last step in gout development that aggravates AHUA into gout. Our findings should help to elucidate the molecular mechanisms of gout development and assist the prevention of gout attacks in high-risk AHUA individuals.

Key messages

What is already known about this subject?

- We and others, in past genome-wide association studies (GWASs) of gout cases and normouricaemia controls, have identified multiple gout risk loci that elevate serum uric acid.

What does this study add?

- We performed the first GWAS of clinically defined gout cases and asymptomatic hyperuricaemia (AHUA) controls.
- This new approach identified two novel gout loci and one suggestive locus that aggravate AHUA into gout.

How might this impact on clinical practice or future developments?

- This first discovery of 'AHUA to gout' loci using a new GWAS strategy will lead to an understanding of why only a proportion of hyperuricaemia cases develop gout.
- These findings will assist physicians to identify, based on individual genetic differences, AHUA cases who need individually tailored pre-emptive medicine for gout.

INTRODUCTION

Gout is one of the the most common forms of inflammatory arthritis. It is induced by monosodium urate (MSU) crystals that result from elevated serum uric acid (SUA) level.¹ The SUA level is determined by the excretion of uric acid via the urate transporters in the kidney and intestine,^{2,3} and the

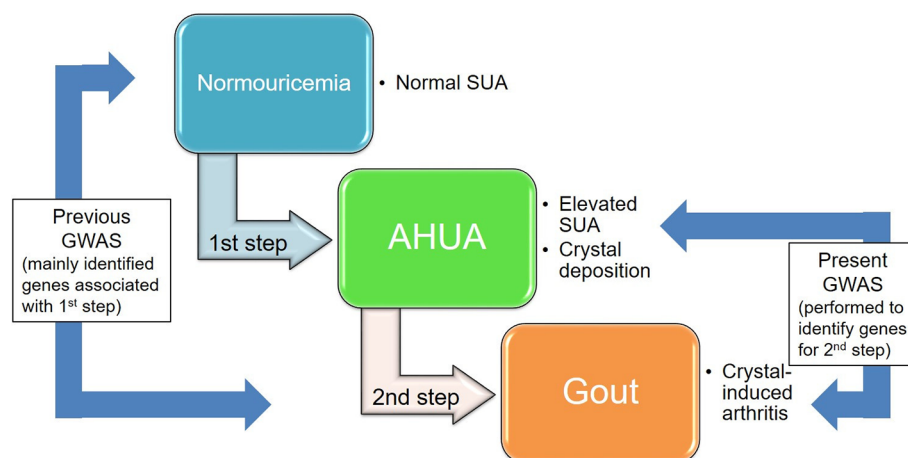


Figure 1 Two steps in the development of gout. We performed, for the first time, a GWAS using clinically defined gout cases and AHUA controls to identify gout loci that influence the progression from hyperuricaemia to gout (the second step). Previous GWASs on gout were performed with gout cases and normouricaemics of which both SUA elevation (the first step) and the second step consisted; however, most of their identified loci were associated with the first step. Because only a proportion of AHUA individuals are known to develop gout, we hypothesised that the genetic effects at the second step would play important roles in crystal-induced inflammation as gout attack. AHUA, asymptomatic hyperuricaemia; GWAS, genome-wide association study; SUA, serum uric acid.

production of uric acid in the liver.² While both genetic and environmental factors are known to cause hyperuricaemia and gout,^{4–9} these diseases are reported to have stronger genetic factors than many other common diseases.^{10–11} Thus far, a number of genes associated with SUA have been identified by genome-wide association studies (GWASs) of SUA,^{12–23} such as the urate transporter genes *ABCG2* (also known as *BCRP*) and *SLC2A9* (also known as *GLUT9*). We and others have performed GWASs of gout by comparing the genetic differences between gout cases and normouricaemia controls^{24–26} and have identified gout risk loci such as *ABCG2* and *SLC2A9*: these are similar results to those from GWASs of SUA. Not all hyperuricaemia cases develop gout: the reason, we consider, is that there are at least two steps by which normouricaemic individuals develop gout. In the first step, the SUA of normouricaemic individuals elevates, creating asymptomatic hyperuricaemia (AHUA); and in the second step, MSU crystal-induced inflammation is experienced as a gout attack (figure 1). Urate transporters such as *ABCG2*,^{4,5,27} *SLC2A9*,²⁸ *SLC22A12*^{29,30} and *SLC17A1*³¹ naturally play important roles in the first step, but there must be other loci for the second step that aggravates AHUA into a gout attack. In this study, for the first time, we performed a gout GWAS using clinically defined gout cases and AHUA controls to identify risk loci that uniquely influence the progression from AHUA to gout, as distinct from causing SUA elevation.

METHODS

Study subjects

In the present study, we avoided the use of self-reported gout cases and AHUA controls and collected only clinically defined individuals.

All gout cases were clinically diagnosed with primary gout according to the criteria established by the American College of Rheumatology.³² All patients were assigned from Japanese male outpatients at the gout clinics of Midorigaoka Hospital (Osaka, Japan), Kyoto Industrial Health Association (Kyoto, Japan), Ryougoku East Gate Clinic (Tokyo, Japan), Nagase Clinic (Tokyo, Japan), Akasaka Central Clinic (Tokyo, Japan) and Jikei University Hospital (Tokyo, Japan). Patients with inherited metabolic disorders, including Lesch-Nyhan syndrome, were

excluded. Finally, 2860 Japanese male gout cases were registered as valid case participants. Of these, 945 cases for GWAS stage were the same patients as reported previously.^{24,25}

As AHUA controls, 3149 individuals were assigned from among Japanese men with a high SUA level (>7.0 mg/dL) without a history of gout, who were obtained from BioBank Japan^{18,33} and the Shizuoka, Daiko, Fukuoka, Saga and Kagoshima areas in the Japan Multi-Institutional Collaborative Cohort Study.^{34,35} The details of participants in this study are shown in the online supplementary table S1.

Genotyping and quality control

Genome-wide genotyping was performed using Illumina HumanOmniExpress V1.0 (Illumina) in 1948 individuals (945 cases and 1003 AHUA controls). The data sets were filtered individually on the basis of single nucleotide polymorphism (SNP) genotype missing call rates ($>1\%$) and the Hardy-Weinberg equilibrium (HWE) in AHUA controls ($p < 1.0 \times 10^{-6}$). We confirmed that all the subjects showed high genotype call rates ($>98\%$). Pairwise identity by state was evaluated to identify pairs of individuals with cryptic relatedness.³⁶ We confirmed that there was no pair showing cryptic relatedness greater than expected for second-degree relatives. We performed principal component analysis including our GWAS data set together with HapMap phase II samples^{37,38} as shown in the online supplementary figure S1, indicating that there are no outliers in our GWAS data. Finally, 569 200 SNPs passed filters for 1948 individuals (945 cases and 1003 controls).

At the first replication (REP1) stage, 1246 gout cases and 1186 AHUA controls were genotyped with a custom genotype platform using iSelect HD Custom Genotyping BeadChips (Illumina) on 897 SNPs, and another 253 gout cases were genotyped with Illumina HumanOmniExpress-24 V1.0 (Illumina). Selected were 897 SNPs using the following criteria: (1) 1000 SNPs were selected as they showed an association ($p < 0.001$ with Fisher's exact test) in the GWAS stage with gout cases and AHUA controls. (2) After 103 undesignable SNPs had been eliminated, 897 SNPs were selected as the custom genotype platform. For quality control, the data set was filtered individually on the basis of SNP genotype missing call rates ($>1\%$).

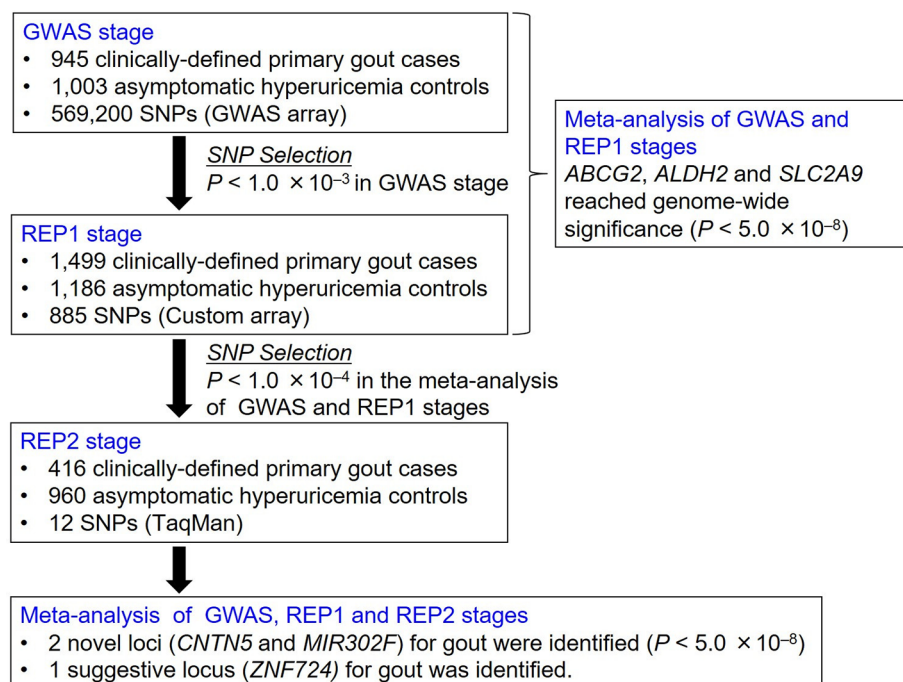


Figure 2 Study design of GWAS of gout cases and asymptomatic hyperuricaemia controls. We performed a GWAS followed by two replication studies (REP1 and REP2 stages) with 2860 Japanese male gout cases and 3149 AHUA controls. Meta-analysis identified two novel loci (*CNTN5* and *MIR302F*) and a suggestive locus (*ZNF724*) at the genome-wide significance level. AHUA, asymptomatic hyperuricaemia; GWAS, genome-wide association study; REP1, the first replication; REP2, the second replication.

We excluded subjects with low genotype call rates ($<98\%$). Quality controls for 253 gout cases genotyped with Illumina HumanOmniExpress-24 V.1.0 (Illumina) were performed as described previously.²⁴ For REP1 stage, 885 SNPs passed filters for 2685 individuals (1499 cases and 1186 controls) as shown in figure 2.

As the criteria at the second replication (REP2) stage, 68 SNPs passing the significance threshold at $p < 1.0 \times 10^{-4}$ in the meta-analysis among the GWAS and REP1 stages were used for the subsequent analyses. In addition to SNPs which had already been reported for gout-associated loci (*ABCG2*, *ALDH2* and *SLC2A9*), we detected top-ranked SNPs among closely located SNPs. We then examined the pairwise linkage disequilibrium (LD) between SNP showing the most significant association and other SNPs. As shown in figure 2, in addition to 3 SNPs of *ABCG2*, *ALDH2* and *SLC2A9*, we finally selected 12 SNPs that were independent of each other at $r^2 < 0.3$ (see online supplementary table S2) for the REP2 stage.

The genotyping for 12 SNPs was performed using an allelic discrimination assay (Custom TaqMan Assay and By-Design, Thermo Fisher Scientific, Waltham, Massachusetts) with a LightCycler 480 (Roche Diagnostics, Mannheim, Germany).³⁹ We confirmed that all 12 SNPs were of high call rate ($>98\%$) and HWE in AHUA controls ($p > 0.001$). After quality control, a statistical analysis was performed with 1376 individuals (416 gout cases and 960 AHUA controls). The details of participants in this study are shown in online supplementary table S1.

Comparison with previous GWAS

The ORs and 95% CIs of gout GWAS with AHUA controls were calculated by meta-analysis with GWAS and REP1 stages in this study, and those of gout GWAS with normouricaemic controls were obtained from our previous study.²⁵

Statistical analysis

We conducted an association analysis using a 2×2 contingency table based on the allele frequency. For each of the filtered SNPs, the p value of association was assessed using Fisher's exact test, and the OR and 95% CI were calculated. The quantile-quantile plot and the genomic inflation factor (λ) were used to test for the presence of systematic bias in the test statistics due to potential population stratification. The genomic inflation factor (λ) was 1.013, indicating a subtle inflation of p values (see online supplementary figure S2). The results from GWAS, in the first and second replication stages, were combined by meta-analysis.⁴⁰ Inverse-variance fixed-effects model meta-analysis was used for estimating summary OR. Cochran's Q test⁴¹ and the I^2 statistic^{42 43} were examined to assess heterogeneity in ORs among the three studies. If heterogeneity was revealed by statistical testing ($p_{\text{het}} < 0.05$) or measurement ($I^2 > 50\%$), we implemented a DerSimonian and Laird random-effects model meta-analysis.⁴⁴ All statistical analyses were performed using PLINK V.1.07 and the software R V.3.1.1⁴⁵ with GenABEL and meta packages. The genome-wide significance threshold was set at $\alpha = 5.0 \times 10^{-8}$ to reveal any evidence of a significant association.

RESULTS

Association analyses

The participants for the GWAS stage were genotyped using HumanOmniExpress V.1.0 (Illumina). Nine hundred forty-five clinically defined gout cases and 1003 AHUA controls passed rigorous quality control filtering (figure 2 and online supplementary figures S1 and S2).

The REP1 stage was then carried out by genotyping 885 SNPs, which showed associations at $p < 1.0 \times 10^{-3}$ in the GWAS stage, using a custom genotype platform that employed iSelect HD Custom Genotyping BeadChips (Illumina) in a further 1499

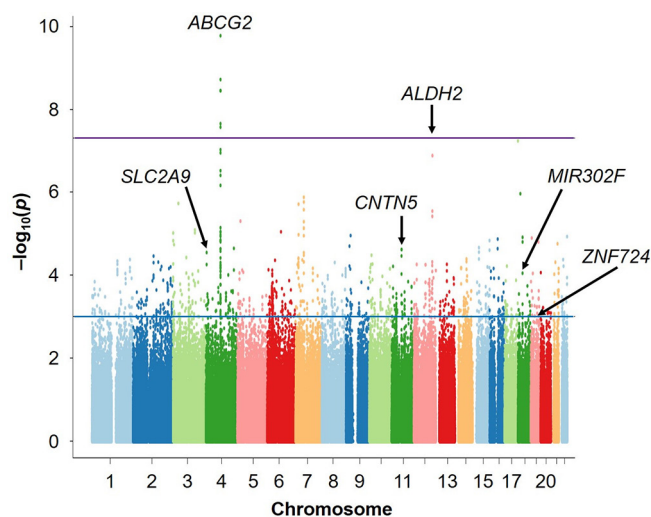


Figure 3 Manhattan plots of the present GWAS (Gout vs AHUA). The x-axis shows chromosomal positions and the y-axis shows $-\log_{10}$ p values. The upper purple horizontal line represents the genome-wide significance threshold ($p=5.0 \times 10^{-8}$). The lower blue line indicates the cut-off level for selecting SNPs for REP1 stage ($p=1.0 \times 10^{-3}$). The gene names of identified loci are also shown in the figure. AHUA, asymptomatic hyperuricaemia; GWAS, genome-wide association study; REP1, the first replication; SUA, serum uric acid.

gout cases and 1186 AHUA controls. A meta-analysis was also conducted among the GWAS and REP1 stages (figure 2).

As a result, we identified three loci showing the associations at the genome-wide significance level ($p < 5.0 \times 10^{-8}$): rs2728125 of *ABCG2* ($p=6.58 \times 10^{-20}$; OR=0.67), rs671 of *ALDH2* ($p=4.44 \times 10^{-14}$; OR=0.68) and rs1014290 of *SLC2A9* ($p=2.29 \times 10^{-9}$; OR=1.30; figures 3 and 4, table 1). Of these, the loci of *ABCG2* and *SLC2A9* were also detected in the previous GWAS of gout cases and normouricaemia controls.²⁴ rs671 of *ALDH2* was identified as a gout-associated SNP in a subsequent fine mapping study.⁴⁶ The present study therefore identified rs671 of *ALDH2* as a gout locus by GWAS for the first time.

To identify additional risk loci, we recruited independent participants comprising 416 gout cases and 960 AHUA controls. Twelve SNPs were selected for the REP2 stage by considering LD among 68 SNPs showing associations at $p < 1.0 \times 10^{-4}$ in the meta-analysis among the GWAS and REP1 stages. Genotyping of these 12 SNPs was performed by TaqMan assay, and the meta-analysis was conducted among the GWAS, REP1 and REP2 stages (figure 2). Online supplementary tables S2A and S2B summarise the GWAS and replication study of three SNPs which have been reported to have gout-associated loci (*ABCG2*, *ALDH2* and *SLC2A9*) and the 12 SNPs selected for the REP2 stage.

Finally, two novel loci achieved genome-wide significance in the meta-analysis of three stages (figures 3 and 4, table 1): an intronic SNP of *CNTN5*, rs7927466 ($p_{\text{meta}}=5.33 \times 10^{-9}$; OR=1.85) and an intergenic SNP located on near *MIR302F*, rs9952962 ($p_{\text{meta}}=1.67 \times 10^{-8}$; OR=0.81). In addition, an intergenic SNP nearing *ZNF724* (rs12980365) showed a suggestive level of association ($p_{\text{meta}}=9.76 \times 10^{-8}$; OR=1.77).

Comparison with previous GWASs

We investigated whether or not these identified risk loci are associated with gout susceptibility via SUA elevation (the first step in figure 1). We compared the ORs for each locus in the

present GWAS (gout vs AHUA) with those in the previous GWAS²⁵ (gout vs normouricaemia): that is, the 3 loci identified in this study ('AHUA to gout' loci; *CNTN5*, *MIR302F* and *ZNF724*) and 10 previously identified risk loci²⁵ ('normouricaemia to gout' loci; *ABCG2*, *SLC2A9*, *CUX2*, *SLC22A12*, *GCKR*, *SLC17A1*, *HIST1H2BF-HIST1H4E*, *CNIH-2*, *NIPAL1* and *FAM35A*) (figure 5 and online supplementary table S3). Interestingly, when plotted, the 'AHUA to gout' loci and 'normouricaemia to gout' loci appeared as distinct patterns (figure 5). The 'normouricaemia to gout' loci trended under the oblique line, whereas all three 'AHUA to gout' loci were located above the oblique line, clearly indicating that these novel loci are associated with distinct mechanisms of gout development that differs from those of 10 known gout loci (see online supplementary table S3).²⁵ It is consistent with the finding that 'the ratio of the two ORs' of each locus in the present GWAS (gout vs AHUA) is >1 , whereas that of each locus in the previous GWAS (gout vs normouricaemia) is <1 (see online supplementary table S3).²⁵ We also investigated the effect of each locus on SUA using the results from our recent GWAS meta-analysis of SUA with a total of 121 745 Japanese subjects⁴⁷ and the results from GWAS meta-analysis of SUA with a total of 110 347 individuals of European ancestry within the Global Urate Genetics Consortium (GUGC).²² The association results for each locus are shown in online supplementary table S4. Both results are consistent with those of the present study (shown in figure 5). Furthermore, we also investigated the association results for three gout locus identified in the present GWAS from the result of the gout GWAS (gout vs non-gout) using a total of 69 374 individuals (2115 gout cases and 67 259 controls) of European ancestry within GUGC (see online supplementary table S5).²² The two SNPs that were polymorphic in European populations were evaluated. After Bonferroni correction ($p < 2.5 \times 10^{-2} = 0.05/2$), rs12980365 of *ZNF724* showed a significant association with gout in persons of European ancestry ($p=8.54 \times 10^{-3}$, online supplementary table S5).

DISCUSSION

It is well known that gout has stronger genetic contributors than other common diseases, and that only a proportion of AHUA individuals develop gout, but no studies have hitherto reported the differences in genetic background between gout and AHUA. Through the present study, we first performed GWAS with gout cases and AHUA controls and identified two novel loci that have a stronger effect on the second step (AHUA to gout) in the development of gout. The present study detected the loci of *ABCG2*, *SLC2A9* and *ALDH2*. One of them, rs671 of *ALDH2*, was identified as a gout locus by GWAS for the first time.

We have also discovered that rs7927466 of *CNTN5* is a gout susceptibility locus. *CNTN5* is a member of the contactin family, which mediates cell surface interactions during the development of the nervous system.^{48 49} There are several reports that *CNTN5* is associated with neuropsychiatric disorders, such as autism spectrum disorder,^{50 51} attention deficit hyperactivity disorder⁵² and anorexia nervosa.⁵³ Interestingly, *CNTN5* has also been reported to be associated with inflammatory diseases including ankylosing spondylitis⁵⁴ and Behçet disease.⁵⁵ It has also been reported that another intronic SNP of *CNTN5* (rs1813445) is associated with the response to anti-tumour necrosis factor therapy in rheumatoid arthritis⁵⁶ and Crohn's disease.⁵⁷ Since the present findings indicate that the SNPs of *CNTN5* could be involved in the second step of gout development, it is assumed that *CNTN5* polymorphisms could also cause inflammation at

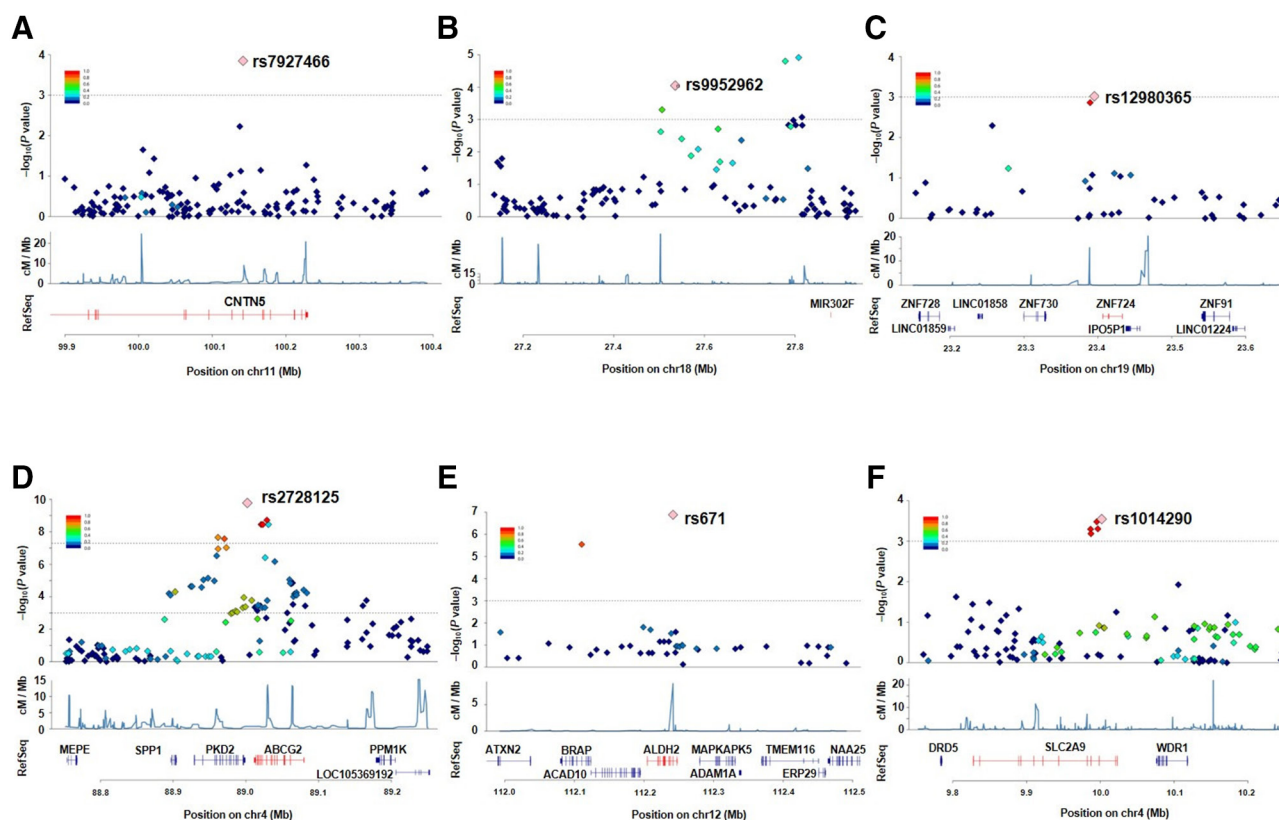


Figure 4 Regional association plots for the six loci identified in the present GWAS (gout vs AHUA). The vertical axis represents $-\log_{10}(p \text{ value})$ for assessment of the association of each SNP with gout. The highest association signal in each panel is located on (A) *CNTN5*, (B) *MIR302F* as novel loci and (C) *ZNF724* as a suggestive locus and (D) *ABCG2*, (E) *ALDH2* and (F) *SLC2A9* as known loci. The region within 250 kb from the SNP indicating the lowest p value is shown. Top panel: plots of $-\log_{10}(p \text{ value})$ for the test of SNP association with gout in the GWAS stage. The SNP showing the lowest p value in the meta-analysis is depicted as a pink diamond. Other SNPs are colour coded according to the extent of linkage disequilibrium (measured in r^2) with the SNP showing the lowest p value. Middle panel: recombination rates (centimorgans per MB) estimated from HapMap phase II data are plotted. Bottom panel: RefSeq genes. Genomic coordinates are based on NCBI human genome reference sequence build 37. Details of the results for the six loci are also shown in table 1. AHUA, asymptomatic hyperuricaemia; GWAS, genome-wide association study; NCBI, National Center for Biotechnology Information; SNP, single nucleotide polymorphism.

the joints where MSU crystals are deposited resulting from high SUA.

We also identified rs9952962, an SNP near *MIR302F* as a novel gout locus. MicroRNAs (miRNAs) were discovered in 1993⁵⁸: they are small non-coding RNA molecules which play an important role in regulating gene expression.⁵⁹ It is reported that miR-302f is deregulated in gastric cancer⁶⁰ and that chemotherapy modifies miR-302f expression in esophageal cancer.⁶¹ As several miRNAs have been identified as being involved in the pathogenesis of other non-infectious forms of inflammatory arthritis, including rheumatoid arthritis,^{62 63} some reports have also shown a relationship between miRNA and gouty arthritis.^{64–66} Our results might suggest that miR-302f affects the inflammation seen in gouty arthritis by modulating gene expression, although further analysis will be needed to elucidate the relationship between them.

We also identified rs12980365, an SNP of *ZNF724*, as a potential gout locus. However, there are no reports so far on *ZNF724*. It is of course possible that the identified loci in the present study are just surrogate markers and that other genes including *ZNF730* and *IPO5P1* near these SNPs are the true risk loci for gout development. The limitation is the lack of imputation because we applied the study design shown in figure 2. Further analysis of larger samples with imputation will be the key to identifying more gout loci.

The unique finding in the present study is that the novel loci for 'AHUA to gout' and known loci for 'normouricaemia to gout' appear to relate to different molecular mechanisms of gout development (figure 5 and online supplementary table S3). The 'AHUA to gout' loci identified in the present study appear to be involved in the second step of development from AHUA to gouty arthritis rather than the 'normouricaemia to gout' loci (figure 1). Since only a proportion of hyperuricaemia cases develop gout and most hyperuricaemia cases remain as AHUA cases, the molecules involved in this step are likely to play important roles in innate immunity and/or inflammation in response to MSU deposition.

The frequency of female gout cases is low (1.15% in our data) in Japan, which shows that analysing only male gout patients in the present study should be more appropriate for detecting genetic factors of gout. Because each locus identified in the present GWAS did not show a significant association with SUA in persons of European ancestry or in Japanese individuals (see online supplementary table S4), our findings show that they are not likely to be a locus that is associated with AHUA susceptibility. Interestingly, the present study also demonstrated that rs12980365 of *ZNF724* showed a significant association with gout in persons of European ancestry within GUGC, which compared gout and non-gout individuals. This finding suggests that *ZNF724* is a novel gout locus that aggravates AHUA into

Table 1 Five SNPs showing significant association at the genome-wide significance level and one suggestive SNP

| Allele* | GWAS stage† | | | | | | | | | | REP1 stage‡ | | | | | | | | | | REP2 stage§ | | | | | | | | | | Meta-analysis** | | | |
|---------|-------------|-----|-----|-------------|---------|-------|-----------------------|---------------------|------------------------|---------|-------------|---------------------|------------------------|---------|-------|---------------------|-----------------------|---------------------|-----------------------|---------------------|-----------------------|---------------------|------------------------|---------------------|-------------|-------------|---------|---------|-------------|---------|-----------------|-------------|---------|-------------|
| | SNP | A/B | Chr | Position† | Gene | Case | Risk allele frequency | | | | Case | Control | OR (95% CI) | P value | Case | Control | OR (95% CI) | P value | Case | Control | OR (95% CI) | P value | Fixed-effect model | Random-effect model | Cochran's Q | | | | | | | | | |
| | | | | | | | Control | OR (95% CI) | P value | Control | | | | | | | | | | | | | | | | OR (95% CI) | P value | Control | OR (95% CI) | P value | Control | OR (95% CI) | P value | OR (95% CI) |
| | rs2728125 | G/A | 4 | 89 001 893 | ABCG2 | 0.401 | 0.304 | 1.54 (1.35 to 1.76) | 1.76×10 ⁻¹⁰ | 0.400 | 0.313 | 1.46 (1.31 to 1.64) | 5.33×10 ⁻¹¹ | NA | NA | NA | NA | NA | NA | NA | NA | 1.49 (1.37 to 1.63) | 6.58×10 ⁻²⁰ | 1.49 (1.37 to 1.63) | 0.57 | 0 | | | | | | | | |
| | rs671 | C/T | 12 | 112 241 766 | ALDH2 | 0.821 | 0.751 | 1.52 (1.30 to 1.77) | 1.33×10 ⁻⁷ | 0.821 | 0.760 | 1.44 (1.26 to 1.65) | 5.94×10 ⁻⁸ | NA | NA | NA | NA | NA | NA | NA | NA | 1.47 (1.33 to 1.63) | 4.44×10 ⁻¹⁴ | 1.47 (1.33 to 1.63) | 0.62 | 0 | | | | | | | | |
| | rs1014290 | T/C | 4 | 10 001 861 | SLC2A9 | 0.678 | 0.623 | 1.28 (1.12 to 1.46) | 2.75×10 ⁻⁴ | 0.674 | 0.611 | 1.31 (1.17 to 1.47) | 2.03×10 ⁻⁶ | NA | NA | NA | NA | NA | NA | NA | NA | 1.30 (1.19 to 1.41) | 2.29×10 ⁻⁹ | 1.30 (1.19 to 1.41) | 0.76 | 0 | | | | | | | | |
| | rs7927466 | A/G | 11 | 100 141 763 | CNTN5 | 0.976 | 0.953 | 1.99 (1.39 to 2.85) | 1.59×10 ⁻⁴ | 0.973 | 0.954 | 1.74 (1.30 to 2.33) | 2.29×10 ⁻⁴ | 0.976 | 0.954 | 1.91 (1.16 to 3.12) | 1.03×10 ⁻² | 1.85 (1.50 to 2.27) | 5.33×10 ⁻⁹ | 1.85 (1.50 to 2.27) | 5.33×10 ⁻⁹ | 1.85 (1.50 to 2.27) | 0.84 | 0 | | | | | | | | | | |
| | rs9552962 | C/T | 18 | 27 535 568 | MIR302F | 0.549 | 0.486 | 1.29 (1.14 to 1.46) | 8.07×10 ⁻⁵ | 0.547 | 0.506 | 1.18 (1.06 to 1.31) | 2.97×10 ⁻³ | 0.552 | 0.490 | 1.28 (1.09 to 1.51) | 2.92×10 ⁻³ | 1.24 (1.15 to 1.33) | 1.67×10 ⁻⁸ | 1.24 (1.15 to 1.33) | 1.67×10 ⁻⁸ | 1.24 (1.15 to 1.33) | 0.50 | 0 | | | | | | | | | | |
| | rs12980365 | A/G | 19 | 23 395 317 | ZNF724 | 0.976 | 0.957 | 1.84 (1.27 to 2.65) | 1.12×10 ⁻³ | 0.974 | 0.959 | 1.61 (1.19 to 2.18) | 1.97×10 ⁻³ | 0.975 | 0.948 | 2.09 (1.29 to 3.36) | 2.58×10 ⁻³ | 1.77 (1.43 to 2.18) | 9.76×10 ⁻⁸ | 1.77 (1.43 to 2.18) | 9.76×10 ⁻⁸ | 1.77 (1.43 to 2.18) | 0.65 | 0 | | | | | | | | | | |

*Allele A is risk-associated allele, and allele B is non-risk-associated allele.

†SNP positions are based on NCBI human genome reference sequence Build 37.4.

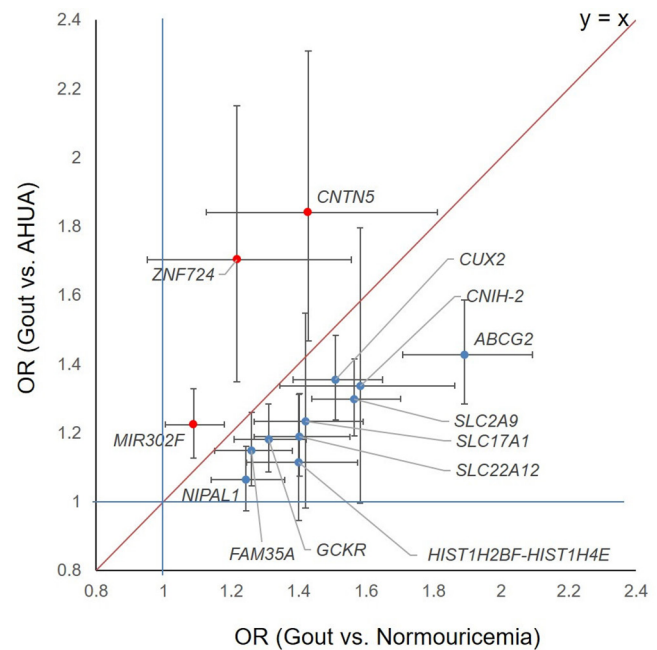
‡945 gout cases and 1003 AHUA controls.

§1499 gout cases and 1186 AHUA controls.

¶416 gout cases and 960 AHUA controls.

**Meta-analyses of the combined GWAS and replication samples (2860 gout cases and 3149 controls of Japanese men).

***Meta-analyses of the combined GWAS and replication samples (2860 gout cases and 3149 controls of Japanese men); REP1, the first replication; REP2, the second replication; SNP, single nucleotide polymorphism.

**Figure 5** Comparison ORs for three gout loci by the present GWAS (gout vs AHUA) with ORs for 10 gout loci by the previous GWAS (gout vs normouricaemia). Dots represent ORs and lines represent 95% CIs. The horizontal axis shows ORs for gout compared with normouricaemia, and the vertical axis shows ORs for gout compared with AHUA, whereas 10 'normouricaemia to gout' loci are located under the oblique line, three novel 'AHUA to gout' loci are above it. AHUA, asymptomatic hyperuricaemia; GWAS, genome-wide association study.

gout, also in individuals of European ancestry. However, since the GWAS within the GUGC was a study using non-gout individuals as controls, it is necessary to perform replication studies using AHUA as controls. Thus, further analyses of independent populations using AHUA controls will be required in the future (see online supplementary table S5).

This first discovery of 'AHUA to gout' loci using a new GWAS strategy will lead to elucidation of the molecular mechanism of the last step of gout development, which will clarify the individual genetic differences that explain why only a proportion of hyperuricaemia cases develop gout and to the prevention of gout attacks in high-risk AHUA individuals. These findings will assist physicians to identify AHUA cases who need adequate preemptive medicine for gout based on individual genetic differences. <http://dx.doi.org/10.1136/annrheumdis-2019-215521>

Author affiliations

¹Department of Integrative Physiology and Bio-Nano Medicine, National Defense Medical College, Tokorozawa, Saitama, Japan

²Department of General Medicine, National Defense Medical College, Tokorozawa, Saitama, Japan

³Division of Human Genetics, Department of Integrated Genetics, National Institute of Genetics, Mishima, Shizuoka, Japan

⁴Medical Squadron, Air Base Group, Western Aircraft Control and Warning Wing, Japan Air Self-Defense Force, Kasuga, Fukuoka, Japan

⁵Department of Statistical Genetics, Osaka University Graduate School of Medicine, Suita, Osaka, Japan

⁶Laboratory for Statistical Analysis, RIKEN Center for Integrative Medical Sciences, Yokohama, Kanagawa, Japan

⁷Laboratory of Statistical Immunology, Immunology Frontier Research Center (WPI-IFReC), Osaka University, Suita, Osaka, Japan

⁸Department of Medical Biochemistry, Kurume University School of Medicine, Kurume, Fukuoka, Japan

⁹Department of Defense Medicine, National Defense Medical College, Tokorozawa, Saitama, Japan

- ¹⁰Midorigaoka Hospital, Takatsuki, Osaka, Japan
¹¹Kyoto Industrial Health Association, Kyoto, Japan
¹²Ryugoku East Gate Clinic, Tokyo, Japan
¹³Nagase Clinic, Tokyo, Japan
¹⁴Akasaka Central Clinic, Tokyo, Japan
¹⁵Department of Bioinformatics and Genomics, Graduate School of Advanced Preventive Medical Sciences, Kanazawa University, Kanazawa, Ishikawa, Japan
¹⁶Department of Preventive Medicine, Faculty of Medicine, Saga University, Saga, Japan
¹⁷Department of International Island and Community Medicine, Kagoshima University Graduate School of Medical and Dental Sciences, Kagoshima, Japan
¹⁸Department of Preventive Medicine, Nagoya University Graduate School of Medicine, Nagoya, Aichi, Japan
¹⁹Department of Preventive Medicine, Institute of Health Biosciences, the University of Tokushima Graduate School, Tokushima, Japan
²⁰Department of Urology, National Defense Medical College, Tokorozawa, Saitama, Japan
²¹Department of Oral Epidemiology, Hiroshima University Graduate School of Biomedical & Health Sciences, Hiroshima, Japan
²²Department of Surgery, National Defense Medical College, Tokorozawa, Saitama, Japan
²³Department of Preventive Medicine and Public Health, National Defense Medical College, Tokorozawa, Saitama, Japan
²⁴Department of Geriatric Medicine, Graduate School of Medical Sciences, Kyushu University, Fukuoka, Japan
²⁵Laboratory for Mathematics, National Defense Medical College, Tokorozawa, Saitama, Japan
²⁶Institute of Rheumatology, Prague, Czech Republic
²⁷Department of Pediatrics and Adolescent Medicine, First Faculty of Medicine, Charles University and General University Hospital, Prague, Czech Republic
²⁸Department of Biochemistry, University of Otago, Dunedin, New Zealand
²⁹Data Science Division, Data Coordinating Center, Department of Advanced Medicine, Nagoya University Hospital, Nagoya, Aichi, Japan
³⁰Department of Environmental and Preventive Medicine, Jichi Medical University School of Medicine, Shimotsuke, Tochigi, Japan
³¹Department of Genome Science, School of Dentistry, Aichi Gakuin University, Nagoya, Aichi, Japan
³²Department of Pharmacy, the University of Tokyo Hospital, Tokyo, Japan
³³Laboratory of Bioresponse Regulation, Graduate School of Pharmaceutical Sciences, Osaka University, Suita, Osaka, Japan
³⁴Division of Inflammation Biology, Institute for Enzyme Research, Tokushima University, Tokushima, Japan
³⁵Center for Genomic Medicine, Kyoto University Graduate School of Medicine, Kyoto, Japan
³⁶Department of Genomic Medicine, Research Institute, National Cerebral and Cardiovascular Center, Suita, Osaka, Japan
³⁷RIKEN Center for Integrative Medical Sciences, Yokohama, Kanagawa, Japan
³⁸Division of Kidney and Hypertension, Department of Internal Medicine, Jikei University School of Medicine, Minato-ku, Tokyo, Japan
³⁹Department of Pathophysiology and Therapy in Chronic Kidney Disease, Jikei University School of Medicine, Minato-ku, Tokyo, Japan
⁴⁰Department of Pathophysiology, Tokyo University of Pharmacy and Life Sciences, Hachioji, Tokyo, Japan

Correction notice This article has been corrected since it published Online First. The section heading has been changed.

Acknowledgements We would like to thank all the participants involved in this study. We are indebted to K Gotanda, M Miyazawa, Y Aoyagi, Y Aoki, K Maehara, M Kiriwara, M Ishino and A Akashi (National Defense Medical College) for genetic analysis. We also thank S Ushida (Ikagaku), H Fujiwara (Midorigaoka Hospital) and N Hamajima (Nagoya University Graduate School of Medicine) for sample collection.

Contributors H Nakaoka, KY, M Kubo, II, NS and H Matsuo conceived and designed this study. Y Kawamura, AN, YO, MS, M Nakatochi, Y Kamatani and AT assisted with research design. T Shimizu, HO, K Ooyama, M Nagase, YH, T Hosoya, KI and H Matsuo collected and analysed the clinical data of the cases. YO, YN, IS, AH, MH, RI, M Naito, KT, T Takezaki, KW, K Ohnaka, Y Kamatani, AT and M Kubo collected and analysed clinical data of controls. Y Kawamura, AN, KY, T Higashino, MS, YS, SS, M Kawaguchi, MT, M Nakajima, NS and H Matsuo performed genetics analysis. H Nakaoka, YO, MS, H Nakashima, TN, M Nakatochi, AT and II performed statistical analysis. Y Kawamura, AN, YO, T Higashino and H Matsuo analysed the data. H Matsuo organised this collaborative study. H Nakaoka, KY, T Higashino, KH, SK, HU, S Iwasawa, BS, TR, M Nakatochi, S Ichihara, MY, T Takada, T Saitoh, KA, KI, II and NS provided intellectual input and assisted with the preparation of the manuscript. Y Kawamura, H Nakaoka, AN, MS and H Matsuo wrote the manuscript.

Funding The present study was supported by grants from the Ministry of Education, Culture, Sports, Science and Technology (MEXT) of Japan including KAKENHI grants (nos. 25293145, 22150002, 16H06279 and 15K15227); the Ministry of Health,

Labor and Welfare of Japan; the Ministry of Defense of Japan; the Japan Society for the Promotion of Science (JSPS); the Kawano Masanori Memorial Foundation for Promotion of Pediatrics and the Gout Research Foundation of Japan. The Japan Multi-Institutional Collaborative Cohort Study was supported by Grants-in-Aid for Scientific Research from MEXT, including those for Priority Areas of Cancer (no. 17015018) and Innovative Areas (no. 22150001), as well as by a JSPS KAKENHI grant (no. 16H06277). This study was supported in part by funding from the BioBank Japan Project from the Japan Agency for Medical Research and Development, and the Ministry of Education, Culture, Sports, Science and Technology.

Competing interests None declared.

Patient consent for publication Obtained.

Ethics approval This study was approved by the Institutional Ethical Committees (National Defense Medical College and Nagoya University). Written consent was obtained from all of its participants. All procedures involved in this study were performed in accordance with the Declaration of Helsinki.

Provenance and peer review Not commissioned; externally peer reviewed.

Data availability statement No additional data are available.

Open access This is an open access article distributed in accordance with the Creative Commons Attribution 4.0 Unported (CC BY 4.0) license, which permits others to copy, redistribute, remix, transform and build upon this work for any purpose, provided the original work is properly cited, a link to the licence is given, and indication of whether changes were made. See: <https://creativecommons.org/licenses/by/4.0/>.

REFERENCES

- Roddy E, Mallen CD, Doherty M. Gout. *BMJ* 2013;347:f5648.
- Ichida K, Matsuo H, Takada T, et al. Decreased extra-renal urate excretion is a common cause of hyperuricemia. *Nat Commun* 2012;3:764.
- Matsuo H, Tsunoda T, Ooyama K, et al. Hyperuricemia in acute gastroenteritis is caused by decreased urate excretion via ABCG2. *Sci Rep* 2016;6:31003.
- Matsuo H, Takada T, Ichida K, et al. Common defects of ABCG2, a high-capacity urate exporter, cause gout: a function-based genetic analysis in a Japanese population. *Sci Transl Med* 2009;1:5ra11.
- Woodward OM, Köttgen A, Coresh J, et al. Identification of a urate transporter, ABCG2, with a common functional polymorphism causing gout. *Proc Natl Acad Sci U S A* 2009;106:10338–42.
- Matsuo H, Ichida K, Takada T, et al. Common dysfunctional variants in ABCG2 are a major cause of early-onset gout. *Sci Rep* 2013;3:2014.
- Williams PT. Effects of diet, physical activity and performance, and body weight on incident gout in ostensibly healthy, vigorously active men. *Am J Clin Nutr* 2008;87:1480–7.
- Choi HK, Atkinson K, Karlson EW, et al. Alcohol intake and risk of incident gout in men: a prospective study. *Lancet* 2004;363:1277–81.
- Mikuls TR, Farrar JT, Bilker WB, et al. Gout epidemiology: results from the UK general practice research database, 1990–1999. *Ann Rheum Dis* 2005;64:267–72.
- Nakayama A, Matsuo H, Nakaoka H, et al. Common dysfunctional variants of ABCG2 have stronger impact on hyperuricemia progression than typical environmental risk factors. *Sci Rep* 2014;4:5227.
- Dalbeth N, Merriman TR, Stamp LK. Gout. *Lancet* 2016;388:2039–52.
- Li S, Sanna S, Maschio A, et al. The GLUT9 gene is associated with serum uric acid levels in Sardinia and Chianti cohorts. *PLoS Genet* 2007;3:e194.
- Döring A, Gieger C, Mehta D, et al. SLC2A9 influences uric acid concentrations with pronounced sex-specific effects. *Nat Genet* 2008;40:430–6.
- Vitart V, Rudan I, Hayward C, et al. SLC2A9 is a newly identified urate transporter influencing serum urate concentration, urate excretion and gout. *Nat Genet* 2008;40:437–42.
- McArdle PF, Parsa A, Chang Y-PC, et al. Association of a common nonsynonymous variant in GLUT9 with serum uric acid levels in old order Amish. *Arthritis Rheum* 2008;58:2874–81.
- Dehghan A, Köttgen A, Yang Q, et al. Association of three genetic loci with uric acid concentration and risk of gout: a genome-wide association study. *Lancet* 2008;372:1953–61.
- Kolz M, Johnson T, Sanna S, et al. Meta-analysis of 28,141 individuals identifies common variants within five new loci that influence uric acid concentrations. *PLoS Genet* 2009;5:e1000504.
- Kamatani Y, Matsuda K, Okada Y, et al. Genome-wide association study of hematological and biochemical traits in a Japanese population. *Nat Genet* 2010;42:210–5.
- Yang Q, Köttgen A, Dehghan A, et al. Multiple genetic loci influence serum urate levels and their relationship with gout and cardiovascular disease risk factors. *Circ Cardiovasc Genet* 2010;3:523–30.
- Tin A, Woodward OM, Kao WHL, et al. Genome-wide association study for serum urate concentrations and gout among African Americans identifies genomic risk loci and a novel URAT1 loss-of-function allele. *Hum Mol Genet* 2011;20:4056–68.

- 21 Sulem P, Gudbjartsson DF, Walters GB, *et al.* Identification of low-frequency variants associated with gout and serum uric acid levels. *Nat Genet* 2011;43:1127–30.
- 22 Kottgen A, Albrecht E, Teumer A, *et al.* Genome-wide association analyses identify 18 new loci associated with serum urate concentrations. *Nat Genet* 2013;45:145–54.
- 23 Okada Y, Sim X, Go MJ, *et al.* Meta-analysis identifies multiple loci associated with kidney function-related traits in east Asian populations. *Nat Genet* 2012;44:904–9.
- 24 Matsuo H, Yamamoto K, Nakaoka H, *et al.* Genome-wide association study of clinically defined gout identifies multiple risk loci and its association with clinical subtypes. *Ann Rheum Dis* 2016;75:652–9.
- 25 Nakayama A, Nakaoka H, Yamamoto K, *et al.* GWAS of clinically defined gout and subtypes identifies multiple susceptibility loci that include urate transporter genes. *Ann Rheum Dis* 2017;76:869–77.
- 26 Li C, Li Z, Liu S, *et al.* Genome-wide association analysis identifies three new risk loci for gout arthritis in Han Chinese. *Nat Commun* 2015;6:7041.
- 27 Higashino T, Takada T, Nakaoka H, *et al.* Multiple common and rare variants of *ABCG2* cause gout. *RMD Open* 2017;3:e000464.
- 28 Matsuo H, Chiba T, Nagamori S, *et al.* Mutations in glucose transporter 9 gene *SLC2A9* cause renal hypouricemia. *Am J Hum Genet* 2008;83:744–51.
- 29 Enomoto A, Kimura H, Chairoungdua A, *et al.* Molecular identification of a renal urate anion exchanger that regulates blood urate levels. *Nature* 2002;417:447–52.
- 30 Sakiyama M, Matsuo H, Shimizu S, *et al.* The effects of *URAT1/SLC22A12* nonfunctional variants, R90H and W258X, on serum uric acid levels and gout/hyperuricemia progression. *Sci Rep* 2016;6:20148.
- 31 Chiba T, Matsuo H, Kawamura Y, *et al.* NPT1/SLC17A1 is a renal urate exporter in humans and its common gain-of-function variant decreases the risk of renal underexcretion gout. *Arthritis Rheumatol* 2015;67:281–7.
- 32 Wallace SL, Robinson H, Masi AT, *et al.* Preliminary criteria for the classification of the acute arthritis of primary gout. *Arthritis Rheum* 1977;20:895–900.
- 33 Nakamura T, Shi D, Tzetzis M, *et al.* Meta-analysis of association between the ASPN D-repeat and osteoarthritis. *Hum Mol Genet* 2007;16:1676–81.
- 34 Hamajima N, J-MICC Study Group. The Japan Multi-Institutional Collaborative Cohort Study (J-MICC study) to detect gene-environment interactions for cancer. *Asian Pac J Cancer Prev* 2007;8:317–23.
- 35 Wakai K, Hamajima N, Okada R, *et al.* Profile of participants and genotype distributions of 108 polymorphisms in a cross-sectional study of associations of genotypes with lifestyle and clinical factors: a project in the Japan Multi-Institutional Collaborative Cohort (J-MICC) Study. *J Epidemiol* 2011;21:223–35.
- 36 Purcell S, Neale B, Todd-Brown K, *et al.* PLINK: a tool set for whole-genome association and population-based linkage analyses. *Am J Hum Genet* 2007;81:559–75.
- 37 Patterson N, Price AL, Reich D. Population structure and eigenanalysis. *PLoS Genet* 2006;2:e190.
- 38 Price AL, Patterson NJ, Plenge RM, *et al.* Principal components analysis corrects for stratification in genome-wide association studies. *Nat Genet* 2006;38:904–9.
- 39 Sakiyama M, Matsuo H, Akashi A, *et al.* Independent effects of *ADH1B* and *ALDH2* common dysfunctional variants on gout risk. *Sci Rep* 2017;7:2500.
- 40 Nakaoka H, Inoue I. Meta-analysis of genetic association studies: methodologies, between-study heterogeneity and winner's curse. *J Hum Genet* 2009;54:615–23.
- 41 Cochran WG. The combination of estimates from different experiments. *Biometrics* 1954;10:101–29.
- 42 Higgins JPT, Thompson SG. Quantifying heterogeneity in a meta-analysis. *Stat Med* 2002;21:1539–58.
- 43 Higgins JPT, Thompson SG, Deeks JJ, *et al.* Measuring inconsistency in meta-analyses. *BMJ* 2003;327:557–60.
- 44 DerSimonian R, Laird N. Meta-analysis in clinical trials. *Control Clin Trials* 1986;7:177–88.
- 45 R Development Core Team. *R: A Language and Environment for Statistical Computing*. Vienna: R. Foundation for Statistical Computing, 2006.
- 46 Sakiyama M, Matsuo H, Nakaoka H, *et al.* Identification of rs671, a common variant of *ALDH2*, as a gout susceptibility locus. *Sci Rep* 2016;6:25360.
- 47 Nakatochi M, Kanai M, Nakayama A, *et al.* Genome-wide meta-analysis identifies multiple novel loci associated with serum uric acid levels in Japanese individuals. *Commun Biol* 2019;2:115.
- 48 Ogawa J, Kaneko H, Masuda T, *et al.* Novel neural adhesion molecules in the Contactin/F3 subgroup of the immunoglobulin superfamily: isolation and characterization of cDNAs from rat brain. *Neurosci Lett* 1996;218:173–6.
- 49 Shimoda Y, Watanabe K. Contactins: emerging key roles in the development and function of the nervous system. *Cell Adh Migr* 2009;3:64–70.
- 50 Poot M. A candidate gene association study further corroborates involvement of contactin genes in autism. *Mol Syndromol* 2014;5:229–35.
- 51 van Daalen E, Kemner C, Verbeek NE, *et al.* Social responsiveness Scale-aided analysis of the clinical impact of copy number variations in autism. *Neurogenetics* 2011;12:315–23.
- 52 Lionel AC, Crosbie J, Barbosa N, *et al.* Rare copy number variation discovery and cross-disorder comparisons identify risk genes for ADHD. *Sci Transl Med* 2011;3:95ra75.
- 53 Nakabayashi K, Komaki G, Tajima A, *et al.* Identification of novel candidate loci for anorexia nervosa at 1q41 and 11q22 in Japanese by a genome-wide association analysis with microsatellite markers. *J Hum Genet* 2009;54:531–7.
- 54 Jung S-H, Yim S-H, Hu H-J, *et al.* Genome-wide copy number variation analysis identifies deletion variants associated with ankylosing spondylitis. *Arthritis Rheumatol* 2014;66:2103–12.
- 55 Ortiz-Fernández L, Carmona F-D, Montes-Cano M-A, *et al.* Genetic analysis with the immunochip platform in Behçet disease. Identification of residues associated in the HLA class I region and new susceptibility loci. *PLoS One* 2016;11:e0161305.
- 56 Umičević Mirkov M, Cui J, Vermeulen SH, *et al.* Genome-wide association analysis of anti-TNF drug response in patients with rheumatoid arthritis. *Ann Rheum Dis* 2013;72:1375–81.
- 57 Thomas D, Gazouli M, Karantanos T, *et al.* Association of rs1568885, rs1813443 and rs4411591 polymorphisms with anti-TNF medication response in Greek patients with Crohn's disease. *World J Gastroenterol* 2014;20:3609–14.
- 58 Lee RC, Feinbaum RL, Ambros V. The *C. elegans* heterochronic gene *lin-4* encodes small RNAs with antisense complementarity to *lin-14*. *Cell* 1993;75:843–54.
- 59 Krol J, Loedige I, Filipowicz W. The widespread regulation of microRNA biogenesis, function and decay. *Nat Rev Genet* 2010;11:597–610.
- 60 Yao Y, Suo A-L, Li Z-F, *et al.* MicroRNA profiling of human gastric cancer. *Mol Med Rep* 2009;2:963–70.
- 61 Hummel R, Wang T, Watson DI, *et al.* Chemotherapy-induced modification of microRNA expression in esophageal cancer. *Oncol Rep* 2011;26:1011–7.
- 62 Ceribelli A, Yao B, Dominguez-Gutierrez PR, *et al.* MicroRNAs in systemic rheumatic diseases. *Arthritis Res Ther* 2011;13:229.
- 63 Duroux-Richard I, Jorgensen C, Apparailly F. What do microRNAs mean for rheumatoid arthritis? *Arthritis Rheum* 2012;64:11–20.
- 64 Zhang Q-B, Qing Y-F, Yin C-C, *et al.* Mice with miR-146a deficiency develop severe gouty arthritis via dysregulation of TRAF 6, IRAK 1 and NALP3 inflammasome. *Arthritis Res Ther* 2018;20:45.
- 65 Zhou W, Wang Y, Wu R, *et al.* MicroRNA-488 and -920 regulate the production of proinflammatory cytokines in acute gouty arthritis. *Arthritis Res Ther* 2017;19:203.
- 66 Papanagnou P, Stivarou T, Tsironi M. The role of miRNAs in common inflammatory arthropathies: osteoarthritis and gouty arthritis. *Biomolecules* 2016;6:44.