

Chondroitin sulphate reduces both cartilage volume loss and bone marrow lesions in knee osteoarthritis patients starting as early as 6 months after initiation of therapy: a randomised, double-blind, placebo-controlled pilot study using MRI

Lukas Martin Wildi,¹ Jean-Pierre Raynaud,¹ Johanne Martel-Pelletier,¹ André Beaulieu,² Louis Bessette,³ Frédéric Morin,⁴ François Abram,⁵ Marc Dorais,⁶ Jean-Pierre Pelletier¹

► Additional data (supplementary text) are published online only. To view these articles please visit the journal online (<http://ard.bmj.com>).

¹Osteoarthritis Research Unit, University of Montreal Hospital Research Centre (CRCHUM), Notre-Dame Hospital, Montreal, Canada

²Faculty of Medicine, University of Laval, Québec, Canada

³Groupe de Recherche en Rhumatologie et Maladies Osseuses (GRMO), Sainte-Foy, Canada

⁴Centre de Recherche Musculo-squelettique, Trois-Rivières, Canada

⁵ArthroVision Inc., Montreal, Canada

⁶StatSciences Inc., Notre-Dame de l'Île-Perrot, Canada

Correspondence to

Jean-Pierre Pelletier, Osteoarthritis Research Unit, University of Montreal Hospital Research Centre (CRCHUM), Notre-Dame Hospital, 1560 Sherbrooke Street East, Y2616, Montreal, Québec, Canada H2L 4M1; dr@jppelletier.ca

Accepted 23 January 2011
Published Online First
1 March 2011



This paper is freely available online under the BMJ Journals unlocked scheme, see <http://ard.bmj.com/info/unlocked.dtl>

ABSTRACT

Objective To determine the effect of chondroitin sulphate (CS) treatment on cartilage volume loss, subchondral bone marrow lesions (BML), synovitis and disease symptoms in patients with knee osteoarthritis (OA).

Methods In this pilot multicentre, randomised, double-blind, controlled trial in primary knee OA, 69 patients with clinical signs of synovitis were randomised to receive CS 800 mg or placebo once daily for 6 months followed by an open-label phase of 6 months in which patients in both groups received CS 800 mg once daily. Cartilage volume and BML were assessed by MRI at baseline and at 6 and 12 months; synovial membrane thickness was assessed at baseline and at 6 months.

Results The CS group showed significantly less cartilage volume loss than the placebo group as early as 6 months for the global knee ($p=0.030$), lateral compartment ($p=0.015$) and tibial plateaus ($p=0.002$), with significance persisting at 12 months. Significantly lower BML scores were found for the CS group at 12 months in the lateral compartment ($p=0.035$) and the lateral femoral condyle ($p=0.044$). Disease symptoms were similar between the two groups.

Conclusion CS treatment significantly reduced the cartilage volume loss in knee OA starting at 6 months of treatment, and BML at 12 months. These findings suggest a joint structure protective effect of CS and provide new in vivo information on its mode of action in knee OA.

INTRODUCTION

Of all musculoskeletal conditions, osteoarthritis (OA) has the highest prevalence, affecting a significant percentage of the ageing population.^{1–3} Management of OA requires a long-standing combination of pharmacological and non-pharmacological treatment modalities to relieve pain and to maintain joint mobility in daily life.⁴ Many attempts have therefore been made during the past decades to find treatments that can not only offer pain management, but also alter the course of the disease with the lowest possible risk of adverse events. Only a few medications have been recognised by clinical trials to potentially influence the course of OA beneficially: these include chondroitin sulphate (CS),^{5–8} glucosamine,^{9–11} diacerein,¹² doxycycline¹³ and licofelone.¹⁴ However, all previous disease-modifying OA drug (DMOAD) studies by other groups have used conventional x-rays, which,

although recognised by the authorities, might not have fully explored the drugs' protective effect as this technique allows for only an indirect assessment of the cartilage. Recent advances in MRI have enabled investigators to quantitatively and reliably assess cartilage thickness and volume, as well as the other joint structural changes occurring in the subchondral bone, menisci and synovium.^{15–22} The usefulness of MRI technology in the context of clinical trials exploring DMOAD effects has recently been demonstrated.^{14 23}

CS belongs to the glycosaminoglycans and is a major component of articular cartilage. On OA joint tissues, CS has been shown to modify the chondrocyte death process, to improve the anabolic/catabolic balance of the extracellular cartilage matrix, to reduce some pro-inflammatory and catabolic factors, and to reduce the resorptive properties of subchondral bone osteoblasts.^{24–35} Moreover, meta-analyses of randomised placebo-controlled trials in knee OA patients have demonstrated the efficacy of CS to relieve OA joint pain.^{36–38} CS at a dose of 800 mg orally once daily has been shown to slow significantly the rate of joint space narrowing (JSN) over a period of 2 years in patients with symptomatic radiographic knee OA.^{7 8 39 40} The aim of this study was to confirm the findings from x-ray-based trials on the effect of CS on cartilage volume loss in knee OA patients, yet at a much earlier time period by using MRI, and to evaluate the effect of treatment on subchondral bone lesions and synovitis severity.

PATIENTS AND METHODS

Study design

The present pilot study is a National Institutes of Health (NIH)-registered (NCT00604539) multicentre, randomised, double-blind, controlled trial comparing CS with placebo in patients with primary knee OA. The double-blind phase was of 6 months duration, followed by an open-label phase of 6 months of CS treatment for both groups. The study was conducted from February 2008 to October 2009.

Patient selection

Seventy patients of both sexes between 40 and 80 years of age were recruited from outpatient

rheumatology clinics in the province of Québec, Canada. Inclusion criteria were primary OA of the knee diagnosed according to the clinical and radiological criteria of the American College of Rheumatology (ACR)⁴¹ with clinical signs of synovitis (warmth, swelling or effusion), a disease severity grade 2–3 based on the Kellgren–Lawrence radiographic system,⁴² a minimal medial joint space width (JSW) of 2 mm on standing knee x-ray, and a visual analogue scale (VAS) pain index of at least 40 mm while walking. Concomitant femoropatellar OA was not quantified on x-ray. Participants were required to have no significant laboratory abnormalities. If both knees were affected by OA, the knee with the more pronounced symptoms was selected if within inclusion criteria.

Exclusion criteria were the presence of another rheumatic condition leading to secondary OA (such as rheumatoid arthritis or calcium pyrophosphate dehydrate deposition disease), allergy to CS, contraindications to MRI, progressive serious medical conditions (such as cancer, AIDS or end-stage renal disease), impossibility of participating for the total duration of the study and attending the visits, as well as inability to give informed consent. Patients were also excluded if they were currently, or were within the 3 months prior to inclusion, being treated with corticosteroids, indomethacin, glucosamine, CS or radioactive synovectomy, or within the 6 months preceding inclusion, intra-articular treatment with hyaluronic acid.

Patients were randomly assigned to receive either CS 800 mg (two capsules of 400 mg each; Condrosan, CS Bio-Active; Bioibérica S.A., Barcelona, Spain) or placebo once daily for the first 6 months (double-blind phase) followed by 6 months of treatment with 800 mg CS once daily for both groups (open-label phase). Subjects started study medication at baseline visit according to the randomisation. Condrosan is a prescription drug containing highly purified chondroitins 4- and 6-sulphate of bovine origin in a concentration of not less than 98%. It has an average molecular weight of ~15–16 kDa, and an intrinsic viscosity of ~0.02–0.06 m³/kg. This product has been approved as a prescription treatment for OA in many European countries.

Prior and concomitant treatment

Treatment with medication for osteoporosis at baseline was continued, as were non-steroidal anti-inflammatory drugs (NSAIDs), in an unmodified manner for the entire duration of the study if so wished. The medications and other treatments in use for intercurrent illnesses were recorded at the baseline visit and during the study whenever these treatments were modified.

Rescue medication

Paracetamol up to 3 g/day was allowed as a rescue pain medication. During the open-label phase (from month 6 to 12) NSAIDs were also allowed when needed. The treatment had to be interrupted 24 h before all follow-up visits.

Blinding

The investigators, subjects and sponsors were blinded to the allocated treatment for the first 6 months. Through central randomisation, sealed coded tamper-proof envelopes, specifying the treatment group for each study drug kit number, were provided to each centre. The envelopes were to be opened only in the event of an emergency.

Treatment compliance

The number of tablets of the study drug taken was calculated from the drug dispensation log. The compliance index was calculated as the percentage of the rated drug doses taken between the date of dispensation and the date of return of the study drugs. To remain in the study, a global compliance index of ≥75% was mandatory.

Study schedule

Patients had a screening visit 7–14 days prior to baseline MRI including physical examination for joint swelling or effusion, x-ray and blood samples for routine laboratory tests to assess eligibility. A follow-up physical examination was performed at 3, 6 and 12 months. Patients were contacted every 45 days to report possible adverse events.

Outcome measures

Knee MRI acquisitions

MRI was performed at baseline and at 6 and 12 months on 1.5 T scanners (Siemens, Erlangen, Germany; and General Electric, Milwaukee, Wisconsin, USA) using a standard knee coil. The sequence acquisitions were as previously described^{14 15 43} (see online supplementary text).

Cartilage volume

Cartilage volume was measured by two trained readers (J Thériault and A Pelletier) using the computer program Cartiscope (ArthroVision, Montreal, Canada) as previously described.^{43 44} The readers were blinded to treatment and to MRI examination time points except for baseline. The change in knee cartilage volume was obtained by subtracting the follow-up volume from the initial (baseline) volume. The change in cartilage volume over time was calculated for the entire knee (global, comprising condyles plus tibial plateaus) and subregions including the condyles, tibial plateaus, the medial and lateral compartments (condyle plus tibial plateau), the medial and lateral condyle and tibial plateau, and the trochlea.^{16 45} The trochlea corresponds to the area of the femoral cartilage in contact with the patella.¹⁶ The patellar cartilage volume was not assessed. The reproducibility of the method has previously been demonstrated to be excellent.⁴³

Synovial membrane thickness

Synovial membrane imaging was acquired as previously described²¹ (see online supplementary text). The extent of synovitis was assessed by measuring its thickness in mm in four regions of interest: the medial and lateral articular recess and the medial and lateral border of the suprapatellar bursa.²¹

Bone marrow lesions

Assessment of bone marrow lesions (BML) was performed in the same MRI sequences used for the cartilage assessment as previously described.⁴⁶ The extent of the BML was assessed for the global knee and the subregions using the following scale: 0 = absence, 1 = <25%, 2 = 25–50%, and 3 = >50% of the surface of the respective region regardless of the presence of additional smaller lesions. Reliability of the scoring system for subchondral bone changes was found to be excellent.⁴⁶

Symptoms

Pain, function and stiffness were assessed at baseline and at 1.5, 3, 6 and 12 months using the Western Ontario and McMaster Universities Osteoarthritis Index (WOMAC) questionnaire and the VAS for pain. The impact on quality of life was also assessed

at baseline and at 3, 6 and 12 months using the Short Form 36 General Health (SF-36) questionnaire.

Statistical analysis

Descriptive statistics were performed for all variables in the study. Measures of central tendency (mean, median) and dispersion (SD) were performed for all continuous variables and a proportion calculated for categorical variables.

p Values were assessed by analysis of covariance (ANCOVA) for which the dependent variable was the cartilage volume at 6 and 12 months, and the independent variables were the cartilage volume at baseline and the treatment. Adjustment was made for age and concomitant treatment with bisphosphonates, which could have had an influence on the subchondral bone. BML scores were assessed by the non-parametrical two-sided Mann-Whitney U test. For cartilage and BML, differences between the two groups were assessed for the global knee as well as the subregions. Comparison of synovial membrane thickness and pain levels between the two groups was assessed by analysis of variance (ANOVA) and joint swelling by Fisher's exact test. The analyses on the according-to-protocol population were done separately for the double-blind phase (0–6 months) and for the additional open-label phase (0–12 months). A p value less than 5% was considered statistically significant.

Endpoints

This study focused on the main structural changes observed in the synovial membrane (primary endpoint), cartilage and bone, as well as the pain levels (co-endpoints).

RESULTS

Seventy patients were enrolled in the study; 69 were included as one patient was found not to meet the eligibility criteria after enrolment. Sixty-two (88.6%) patients completed the double-blind phase of the study. Fifty-eight patients continued the study and entered the open-label phase, 54 (93.1%) of whom com-

pleted the study (figure 1). Fifty-four (78%) patients completed both phases.

Baseline characteristics

The baseline characteristics (table 1) were similarly distributed between the two treatment groups with the exception that patients in the CS group had a younger mean age.

Cartilage volume

The data (table 2 and figure 2) revealed that patients in the CS group compared with those in the placebo group experienced a significant reduction in cartilage volume loss in the global knee at 6 months (p=0.030) that persisted at 12 months (p=0.021). A similar significant reduction was seen at both 6 and 12 months in the lateral compartment (p=0.015 and p=0.004, respectively) and the tibial plateaus (p=0.002 and p=0.017, respectively). Moreover, the reduction in both the lateral and medial tibial plateau was statistically different at 6 months (p=0.018 and p=0.016, respectively), with a trend at 12 months (p=0.068 and p=0.052, respectively). The lateral condyle also demonstrated a trend towards a reduction at 6 months (p=0.062) and a significant difference at 12 months (p=0.006). No difference was seen in the trochlea (table 2). After correction for age and concomitant osteoporosis treatment the results remained unchanged with the exception of the global knee with age (p=0.052) and the lateral and medial tibial plateau, which became statistically significant when adjusted for the treatment with bisphosphonates (table 2).

BML score

The BML data (table 3) showed no differences between the two groups at 6 months. However, at 12 months a trend favouring the CS group was found for the global knee (p=0.062), with a significant difference for the lateral compartment (p=0.035) and the lateral condyle (p=0.044). No difference was found in the trochlea.

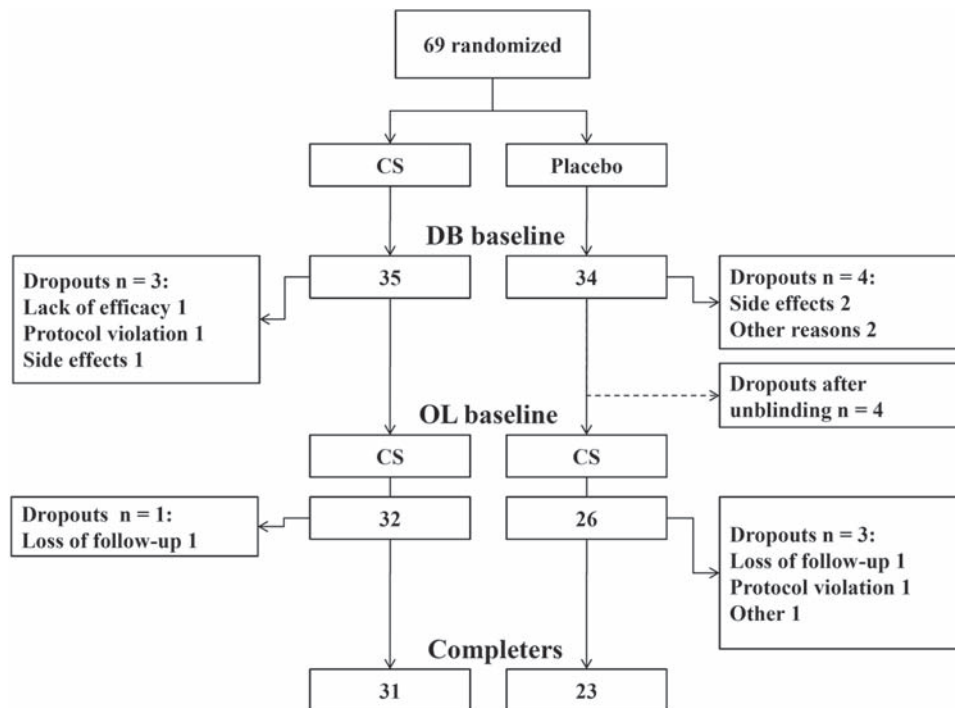


Figure 1 Patient disposition. CS, chondroitin sulphate; DB, double-blind; OL, open-label.

Synovitis

No difference was found between the two groups during the double-blind phase for the changes in the mean global synovial thickness (both were -0.1 mm) and in the percentage of subjects having joint swelling (CS, 20%; placebo, 23.5%; $p=0.767$). Interestingly, patients on concomitant CS and NSAID treatment ($n=8$) (1.3 ± 0.3 mm) at 6 months demonstrated significantly ($p=0.029$) less synovial membrane thickness than the placebo group receiving NSAIDs ($n=10$) (1.6 ± 0.3 mm) and a lower incidence of joint swelling (CS, 0%; placebo, 11.4%; $p=0.092$).

Symptoms and function

No significant difference in disease symptoms assessed by VAS and WOMAC questionnaires (WOMAC total, pain, stiffness and

function) or quality of life (SF-36) at any time point of the study was observed (change in VAS for CS and placebo, respectively, from baseline to 6 months: -14.8 ± 23.7 mm, -20.3 ± 22.1 mm, $p=0.359$; from baseline to 12 months: -21.0 ± 27.1 mm, -24.7 ± 25.0 mm, $p=0.607$. Change in WOMAC pain subscale, respectively, from baseline to 6 months: -79.7 ± 105.6 , -94.4 ± 96.9 , $p=0.572$; from baseline to 12 months: -99.2 ± 96.7 , -124.4 ± 85.3 , $p=0.327$; further data not shown). Paracetamol (rescue medication) was used by 79% of the patients (double-blind $n=69$, CS $n=27$, placebo $n=28$, $p=0.766$). In the open-label phase (month 6 to 12) NSAID rescue was allowed and used by 76% (open-label $n=58$, CS $n=25$, placebo $n=19$, $p=0.761$).

Safety

Non-serious adverse events were equally distributed within the two treatment groups except for infections and skin disorders, which were more frequent in the CS group (table 4). None of them were ascribed beyond any doubt to the treatment, nor were the serious adverse events (SAE) related to the medication.

Table 1 Baseline characteristics

Characteristic	CS (800 mg/day)	Placebo	p Value
	(n=35)	(n=34)	
Age (years)	59.7 \pm 9.4	64.9 \pm 9.5	0.025
BMI (kg/m ²)	30.4 \pm 4.6	31.5 \pm 5.2	0.381
Women (n (%))	21 (60.0)	20 (58.8)	>0.999
Cartilage volume (mm ³)	6347.1 \pm 1815.5	6039.1 \pm 1640.7	0.466
BML global score	1.8 \pm 2.1	2.2 \pm 2.2	0.372
Knee swelling and effusion (n (%))	19 (54.3)	22 (64.7)	0.465
Synovial membrane thickness (mm)	1.8 \pm 0.55	1.8 \pm 0.63	0.855
WOMAC total (0–2400)	1408.3 \pm 357.3	1345.8 \pm 430.5	0.513
VAS (0–100)	63.0 \pm 15.9	62.3 \pm 17.6	0.856
SF-36 general health (0–100)	70.3 \pm 16.5	72.3 \pm 16.7	0.617

Baseline characteristics for the double-blind cohort ($n=69$). Data are expressed as mean \pm SD or number of subjects (%) when appropriate. BMI, body mass index; BML, bone marrow lesion; CS, chondroitin sulphate; SF-36, Short Form 36 General Health questionnaire; VAS, visual analogue scale; WOMAC, Western Ontario and McMaster Universities Osteoarthritis Index.

DISCUSSION

The present pilot study provides, for the first time, evidence of the structure protective effect of CS in knee OA patients as early as 6 months into treatment. In addition, the pronounced reduction in cartilage loss found in the lateral tibiofemoral compartment was also associated with a reduction in the size of BML. This finding is interesting as BML are believed to be associated with the progression of cartilage lesions.^{46–51}

This study is the first to use quantitative MRI to assess the DMOAD potential of CS in knee OA patients, bringing important information to a field in which the results have been contradictory in the past. The positive results are in line with a number of studies using x-ray technology^{5–8} and with a recent meta-analysis that reported CS to be effective in reducing JSN.⁵² However, another recent meta-analysis including x-ray trials of

Table 2 Cartilage volume loss (%) versus baseline

Region	Month	CS		Placebo		p Values		
		Mean	SD	Mean	SD	–	Age*	BP†
Global	6	-2.87	3.26	-4.67	3.39	0.030	0.052	0.011
	12	-3.71	3.14	-6.12	4.59	0.021	0.036	0.014
Lateral compartment	6	-1.5	3.4	-3.69	4.47	0.015	0.028	0.013
	12	-1.51	3.67	-5.04	5.02	0.004	0.006	0.002
Medial compartment	6	-4.43	5.27	-5.9	4.7	0.237	0.308	0.116
	12	-6.17	4.67	-7.73	7.33	0.202	0.276	0.201
Condyles	6	-4.91	4.56	-5.55	4.86	0.309	0.493	0.187
	12	-5.52	4.37	-7.32	5.2	0.077	0.133	0.061
Lateral condyle	6	-2.54	4.73	-4.38	4.94	0.062	0.123	0.072
	12	-1.67	4.66	-5.55	6.24	0.006	0.010	0.005
Medial condyle	6	-7.49	7.71	-6.84	7.07	0.971	0.847	0.673
	12	-9.59	7.7	-9.34	7.84	0.731	0.906	0.719
Tibial plateaus	6	0.02	3.59	-2.96	4.12	0.002	0.002	0.001
	12	-1.09	3.02	-4.22	5.12	0.017	0.022	0.011
Lateral tibial plateau	6	-0.05	3.59	-2.36	6.2	0.018	0.017	0.007
	12	-1.2	4.49	-4.54	6.19	0.068	0.090	0.040
Medial tibial plateau	6	0.55	6.06	-3.92	6.22	0.016	0.016	0.009
	12	-0.44	5.12	-4.84	8.71	0.052	0.059	0.047
Trochlea	6	-1.13	4.35	-1.78	5.87	0.486	0.687	0.389
	12	-1.71	6.22	-4.03	6.24	0.129	0.175	0.068

Data are shown for the percentage change in cartilage volume. p Values of the corresponding subregions were assessed by analysis of covariance (ANCOVA) where the dependent variable was the cartilage volume at 6 and 12 months, and the independent variables were the cartilage volume at baseline and the treatment. Additional adjustment was made for *age and concomitant treatment with t bisphosphonates. $n=32/30$ for CS, $n=28/22$ for placebo at 6 and 12 months, respectively. BP, bisphosphonate treatment ($n=4$ and 1 for CS and placebo, respectively); CS, chondroitin sulphate.

Cartilage

BML

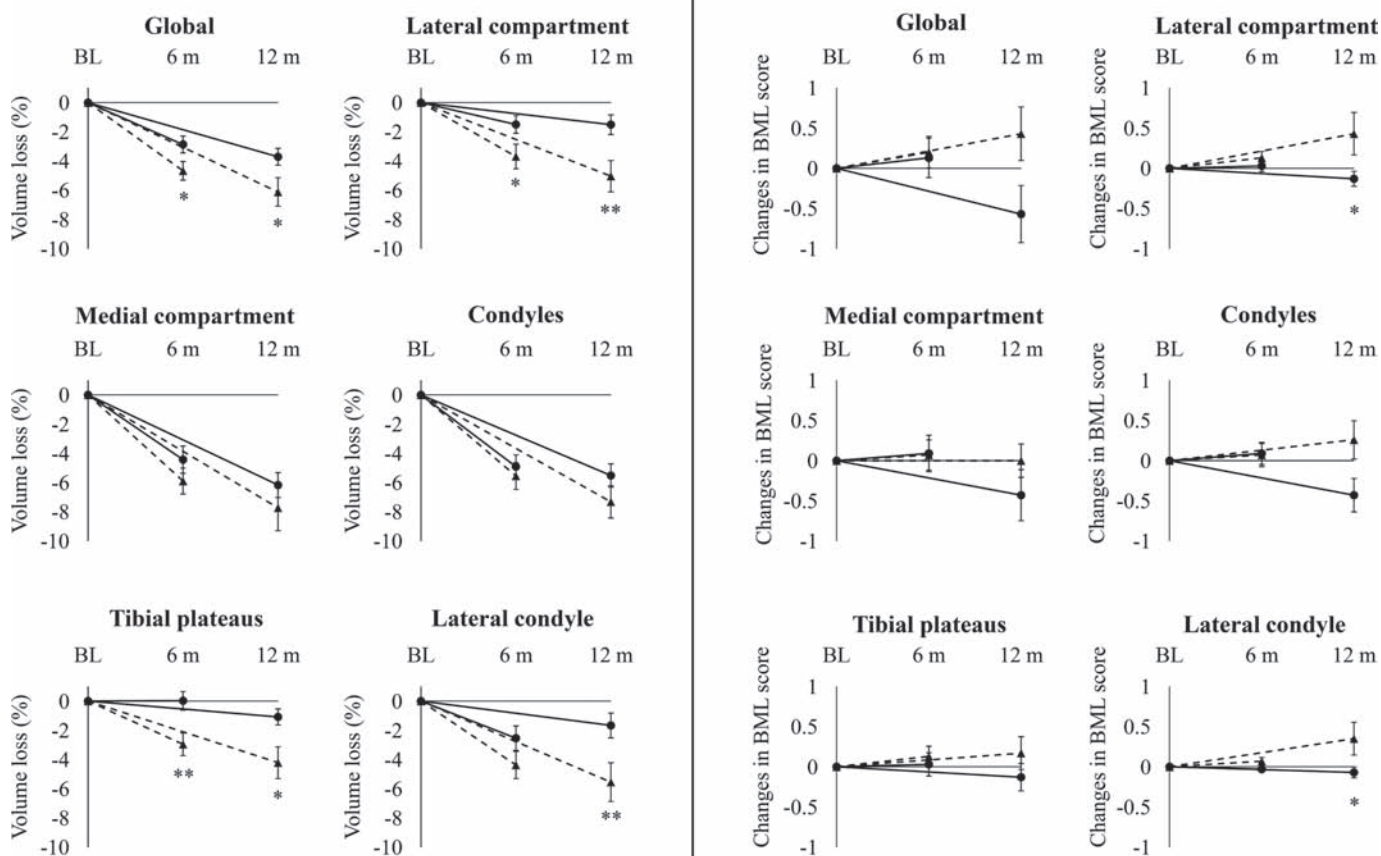


Figure 2 Cartilage volume loss in percentage and changes in bone marrow lesions (BML) score over time compared with baseline (0–6 months and 0–12 months). Solid line, chondroitin sulphate (CS) group; dotted line, placebo group. p Values of the corresponding subregions were assessed by analysis of covariance (ANCOVA) for the cartilage volume (where the dependent variable was the cartilage volume at 6 and 12 months and the independent variables were the cartilage volume at baseline and the treatment) and by the non-parametric Mann–Whitney U test for the BML scores. * $p < 0.05$, ** $p < 0.01$. At 6 months n for cartilage: CS = 32, placebo = 28, for BML: CS = 32, placebo = 29. At 12 months n for cartilage: CS = 30, placebo = 22, for BML: CS = 30, placebo = 23. BL, baseline; m, months.

glucosamine and CS,⁵³ as well as a structural analysis of the Glucosamine/chondroitin Arthritis Intervention Trial (GAIT)⁵⁴ in which a non-fluoroscopically guided x-ray technique was used and sample sizes were small, came to the conclusion that there is no treatment effect of CS. In general, the effect size was reported to be small to moderate, demonstrating the need for further trials that may confirm the positive findings of the present trial and shed light on this controversial field.

In the present study, the shorter time (6 months) needed to obtain significant difference demonstrated the superiority of MRI in such studies. MRI has been shown to reliably and quantitatively assess cartilage volume and its changes over time in knee OA in longitudinal^{15 23} and clinical¹⁴ studies. With regard to this study, as age was significantly different in the two groups the results were adjusted where appropriate and no relevant change overall was found. Of note, the observed rate of cartilage loss found in this study lies within the upper range of previous reports.^{14 43 55 56} Here, CS treatment was found to significantly reduce the cartilage volume loss at 6 months in the global knee, mainly in the lateral tibiofemoral compartment and tibial plateaus. These findings are in accordance with those of a previous MRI multicentre trial¹⁴ in which a protective effect with the DMOAD licofelone was also detected as early as 6 months into the study, and was found predominantly

in the lateral compartment. Data from x-ray studies showed a protective effect of CS mainly in the medial compartment. These findings are probably related to the design of these studies, as in those trials the JSW was measured only in the medial compartment.^{5 6 8} A number of hypotheses could explain the predominant positive effect of CS treatment in the lateral compartment, including: (1) lesions are generally less severe in the lateral compartment than in the medial compartment and may be more responsive to treatment; (2) the effect of CS on the medial compartment could also take place at a later time during the treatment schedule (eg, 2 years).^{7 8} The non-significant effect of the drug seen on the trochlea could reflect the distinct biomechanical environment of the femoropatellar compartment. Our system did not allow for the detection of the cartilage in the patella, which could be considered a limitation of the findings. The significant reduction in cartilage volume loss in the CS group was found to persist until the end of the open phase at the 12-month follow-up. The reduction in the difference of the rate of cartilage loss between the two groups in the double-blind phase (figure 2) could probably be explained by the fact that the placebo group started CS treatment at 6 months. Treatment with CS was effective at reducing both BML and cartilage volume loss in the same anatomical regions; however, a decrease in BML occurred only in the open phase (at 12 months). This

Table 3 Changes in bone marrow lesion scores (BML) versus baseline

Region	Month	CS (800 mg/day)		Placebo		p Value
		Mean	SD	Mean	SD	
Global	6	0.13	1.39	0.20	1.06	0.461
	12	-0.57	1.83	0.43	1.70	0.062
Lateral compartment	6	0.03	0.40	0.13	0.43	0.153
	12	-0.13	0.51	0.43	1.27	0.035
Medial compartment	6	0.09	1.28	0.07	1.01	1.000
	12	-0.43	1.74	0.00	1.00	0.287
Condyles	6	0.09	0.78	0.07	0.78	0.879
	12	-0.43	1.14	0.26	1.14	0.075
Lateral condyle	6	-0.03	0.18	0.07	0.25	0.085
	12	-0.07	0.37	0.35	0.98	0.044
Medial condyle	6	0.13	0.75	0.00	0.74	0.432
	12	-0.37	1.00	-0.09	0.73	0.450
Tibial plateaus	6	0.03	0.82	0.13	0.68	0.374
	12	-0.13	0.94	0.17	0.98	0.347
Lateral tibial plateau	6	0.06	0.35	0.07	0.37	0.644
	12	-0.07	0.25	0.09	0.67	0.358
Medial tibial plateau	6	-0.03	0.74	0.07	0.52	0.303
	12	-0.07	0.91	0.09	0.73	0.732
Trochlea	6	0.16	0.63	0.00	0.45	0.379
	12	-0.07	0.94	0.13	0.63	0.222

p Values were assessed by two-sided Mann-Whitney U test. n=32/30 for CS, n=29/23 for placebo at 6 and 12 months, respectively. CS, chondroitin sulphate.

Table 4 Adverse events

Adverse event	Double-blind 0–6 months		Double-blind/open-label 0–12 months	
	CS	Placebo	CS/CS	Placebo/CS
	n=35	n=35	n=32	n=30
Total non-serious adverse events	55	38	47	32
Eye disorders	1	0	1	0
Gastrointestinal disorders	7	7	7	5
General (peripheral oedema)	1	2	1	1
Infections	12	6	4	3
Injury/poisoning	6	4	3	5
Investigations (creatinine increased)	1	0	1	0
Metabolism and nutrition	0	2	0	0
Musculoskeletal	13	12	13	13
Nervous system	4	2	5	2
Psychiatric disorders	1	2	1	3
Renal and urinary disorders	0	1	0	0
Skin disorders	8	0	7	0
Surgical procedures	1	2	0	0
Vascular disorders	0	0	2	0
Total serious adverse events	1	1	1	2
Atrial fibrillation	1	0	0	0
Cholecystitis	0	1	0	0
Knee arthroplasty	0	0	1	1
Syncope	0	0	0	1

CS, chondroitin sulphate (800 mg/day).

finding could suggest that BML are consequential to cartilage degradation and thus reducing cartilage lesions could lead to fewer BML. Alternatively, BML were shown to be involved in an inflammatory/catabolic process⁵⁷ on which CS could act directly, leading to structural repair. The latter hypothesis is supported by in vitro data showing that CS increases the ratio of osteoprotegerin/receptor activator of nuclear factor- κ B ligand, suggesting a positive effect on OA subchondral bone structural changes.³¹ Data also showed that CS treatment alone did not reduce the synovial membrane thickness (primary endpoint).

This finding contrasts with those from animal models^{26 58–61} and the GAIT,⁶² in which CS treatment was associated with a significant decrease in the incidence of joint swelling, effusion, or both upon clinical examination. The relatively small number of patients in the present pilot study could have been the limiting factor explaining the data.

The effect of the combination of CS with NSAIDs on the synovial membrane thickness and the incidence of joint swelling is interesting with practical clinical impact, and definitely needs future exploration. The absence of differences in disease symptoms between the placebo and CS groups could be explained by the use of rescue medication (paracetamol) as well as NSAIDs, which are strong confounding factors, and this may have masked an underlying symptom-relieving effect of CS. Moreover, as the severity of femoropatellar OA was not assessed, this might have been an additional confounding factor. The impact of the structure-modifying effect of CS on disease symptoms may also become clinically significant only after an extended period of treatment. That question can only be answered by a long-term study. The study design included a double-blind phase (6 months) followed by an open-label phase (6 months) with CS treatment in both groups. This design does not allow for any conclusion regarding the symptom-relieving effects of CS, especially in the open-label phase, as the drop-outs after unblinding occurred only in the placebo group resulting in a possible selection bias. The second phase was primarily chosen to gather additional information on the effects of CS on structural change.

The use of multiple analyses to compare the different structural changes has limitations, including the risks of finding significant results only by chance. Because of a relatively small study sample size, imbalances in baseline characteristics between the treatment groups may have had an impact on our results. For instance, even if there is a numerical difference (without statistical significance) between treatment groups for variables such as BML scores and the presence of knee swelling and effusion, adding these additional variables in the ANCOVA model would not yield any additional significant information. Therefore, a confirmation of these results in a larger trial is mandatory.

The safety profile of CS was excellent and confirms the findings of previous reports.^{5–8 62 63} No SAE were found to be related to CS.

In summary, this pilot study demonstrates with the use of quantitative MRI a significant reduction in cartilage volume loss as early as 6 months into treatment with CS and, for the first time, a significant reduction in BML size. These data underline not only the importance of the crosstalk between cartilage and subchondral bone in OA, but also their potential role in the disease process and response to DMOAD treatment. The anti-inflammatory effect of the combination of CS with NSAIDs is a new and interesting finding that deserves confirmation in a definitive study. In conclusion, CS has been shown to be a safe drug with a positive global effect on OA joint structural changes.

Acknowledgements The authors thank Josée Thériault and André Pelletier for the MRI knee segmentation and Virginia Wallis for her assistance with the manuscript preparation. Lukas Wildi received a grant from the Swiss National Science Foundation and the Fondation du Centre hospitalier de l'Université de Montréal (CHUM).

Funding This investigator-initiated study was supported in part by a grant from Bioiberica (Barcelona, Spain). Bioiberica was involved only in the design of the study and the approval of the final manuscript.

Competing interests J-PR is a consultant for ArthroVision Inc. JM-P and J-PP are consultants for and shareholders in ArthroLab Inc. and ArthroVision Inc. AB, LB and FM received honoraria from ArthroLab Inc. FA is an employee of ArthroVision Inc. MD is a consultant for ArthroVision Inc.

Contributors We have read and approved the manuscript and contributed to the study design, data analysis, interpretation of data and drafting and revision of the manuscript.

Ethics approval This study was approved by the local ethics committees.

REFERENCES

1. **Lawrence RC**, Helmick CG, Arnett FC, *et al*. Estimates of the prevalence of arthritis and selected musculoskeletal disorders in the United States. *Arthritis Rheum* 1998;**41**:778–99.
2. **Felson DT**. An update on the pathogenesis and epidemiology of osteoarthritis. *Radiol Clin North Am* 2004;**42**:1–9.
3. **Issa SN**, Sharma L. Epidemiology of osteoarthritis: an update. *Curr Rheumatol Rep* 2006;**8**:7–15.
4. **Zhang W**, Moskowitz RW, Nuki G, *et al*. OARSI recommendations for the management of hip and knee osteoarthritis, Part II: OARSI evidence-based, expert consensus guidelines. *Osteoarthritis Cartil* 2008;**16**:137–62.
5. **Uebelhart D**, Thonar EJ, Delmas PD, *et al*. Effects of oral chondroitin sulfate on the progression of knee osteoarthritis: a pilot study. *Osteoarthritis Cartil* 1998;**6**(Suppl A):39–46.
6. **Uebelhart D**, Malaise M, Marcolongo R, *et al*. Intermittent treatment of knee osteoarthritis with oral chondroitin sulfate: a one-year, randomized, double-blind, multicenter study versus placebo. *Osteoarthritis Cartil* 2004;**12**:269–76.
7. **Michel BA**, Stucki G, Frey D, *et al*. Chondroitins 4 and 6 sulfate in osteoarthritis of the knee: a randomized, controlled trial. *Arthritis Rheum* 2005;**52**:779–86.
8. **Kahan A**, Uebelhart D, De Vathaire F, *et al*. Long-term effects of chondroitins 4 and 6 sulfate on knee osteoarthritis: the study on osteoarthritis progression prevention, a two-year, randomized, double-blind, placebo-controlled trial. *Arthritis Rheum* 2009;**60**:524–33.
9. **Reginster JY**, Deroisy R, Rovati LC, *et al*. Long-term effects of glucosamine sulphate on osteoarthritis progression: a randomised, placebo-controlled clinical trial. *Lancet* 2001;**357**:251–6.
10. **Pavelká K**, Gatterová J, Olejarová M, *et al*. Glucosamine sulfate use and delay of progression of knee osteoarthritis: a 3-year, randomized, placebo-controlled, double-blind study. *Arch Intern Med* 2002;**162**:2113–23.
11. **Bruyere O**, Pavelka K, Rovati LC, *et al*. Total joint replacement after glucosamine sulphate treatment in knee osteoarthritis: results of a mean 8-year observation of patients from two previous 3-year, randomised, placebo-controlled trials. *Osteoarthritis Cartil* 2008;**16**:254–60.
12. **Dougados M**, Nguyen M, Berdah L, *et al*. Evaluation of the structure-modifying effects of diacerein in hip osteoarthritis: ECHODIAH, a three-year, placebo-controlled trial. Evaluation of the Chondromodulating Effect of Diacerein in OA of the Hip. *Arthritis Rheum* 2001;**44**:2539–47.
13. **Brandt KD**, Mazuca SA, Katz BP, *et al*. Effects of doxycycline on progression of osteoarthritis: results of a randomized, placebo-controlled, double-blind trial. *Arthritis Rheum* 2005;**52**:2015–25.
14. **Raynauld JP**, Martel-Pelletier J, Bias P, *et al*. Protective effects of licofelone, a 5-lipoxygenase and cyclo-oxygenase inhibitor, versus naproxen on cartilage loss in knee osteoarthritis: a first multicentre clinical trial using quantitative MRI. *Ann Rheum Dis* 2009;**68**:938–47.
15. **Raynauld JP**, Kauffmann C, Beaudoin G, *et al*. Reliability of a quantification imaging system using magnetic resonance images to measure cartilage thickness and volume in human normal and osteoarthritic knees. *Osteoarthritis Cartil* 2003;**11**:351–60.
16. **Peterfy CG**, Guermazi A, Zaim S, *et al*. Whole-Organ Magnetic Resonance Imaging Score (WORMS) of the knee in osteoarthritis. *Osteoarthritis Cartil* 2004;**12**:177–90.
17. **Berthiaume MJ**, Raynauld JP, Martel-Pelletier J, *et al*. Meniscal tear and extrusion are strongly associated with progression of symptomatic knee osteoarthritis as assessed by quantitative magnetic resonance imaging. *Ann Rheum Dis* 2005;**64**:556–63.
18. **Loeuille D**, Chary-Valckenaere I, Champigneulle J, *et al*. Macroscopic and microscopic features of synovial membrane inflammation in the osteoarthritic knee: correlating magnetic resonance imaging findings with disease severity. *Arthritis Rheum* 2005;**52**:3492–501.
19. **Conaghan PG**, Felson D, Gold G, *et al*. MRI and non-cartilaginous structures in knee osteoarthritis. *Osteoarthritis Cartil* 2006;**14**(Suppl A):A87–94.
20. **Hunter DJ**, Lo GH, Gale D, *et al*. The reliability of a new scoring system for knee osteoarthritis MRI and the validity of bone marrow lesion assessment: BLOKS (Boston Leeds Osteoarthritis Knee Score). *Ann Rheum Dis* 2008;**67**:206–11.
21. **Pelletier JP**, Raynauld JP, Abram F, *et al*. A new non-invasive method to assess synovitis severity in relation to symptoms and cartilage volume loss in knee osteoarthritis patients using MRI. *Osteoarthritis Cartil* 2008;**16**(Suppl 3):S8–13.
22. **Roemer FW**, Eckstein F, Guermazi A. Magnetic resonance imaging-based semiquantitative and quantitative assessment in osteoarthritis. *Rheum Dis Clin North Am* 2009;**35**:521–55.
23. **Raynauld JP**, Martel-Pelletier J, Abram F, *et al*. Analysis of the precision and sensitivity to change of different approaches to assess cartilage loss by quantitative MRI in a longitudinal multicentre clinical trial in patients with knee osteoarthritis. *Arthritis Res Ther* 2008;**10**:R129.
24. **Bassleer CT**, Combal JP, Bougaret S, *et al*. Effects of chondroitin sulfate and interleukin-1 beta on human articular chondrocytes cultivated in clusters. *Osteoarthritis Cartil* 1998;**6**:196–204.
25. **Ronca F**, Palmieri L, Panicucci P, *et al*. Anti-inflammatory activity of chondroitin sulfate. *Osteoarthritis Cartil* 1998;**6**(Suppl A):14–21.
26. **Omata T**, Itokazu Y, Inoue N, *et al*. Effects of chondroitin sulfate-C on articular cartilage destruction in murine collagen-induced arthritis. *Arzneimittelforschung* 2000;**50**:148–53.
27. **Orth MW**, Peters TL, Hawkins JN. Inhibition of articular cartilage degradation by glucosamine-HCl and chondroitin sulphate. *Equine Vet J Suppl* 2002:224–9.
28. **Wang L**, Wang J, Almqvist KF, *et al*. Influence of polysulphated polysaccharides and hydrocortisone on the extracellular matrix metabolism of human articular chondrocytes in vitro. *Clin Exp Rheumatol* 2002;**20**:669–76.
29. **Chan PS**, Caron JP, Orth MW. Effect of glucosamine and chondroitin sulfate on regulation of gene expression of proteolytic enzymes and their inhibitors in interleukin-1-challenged bovine articular cartilage explants. *Am J Vet Res* 2005;**66**:1870–6.
30. **Chan PS**, Caron JP, Orth MW. Short-term gene expression changes in cartilage explants stimulated with interleukin beta plus glucosamine and chondroitin sulfate. *J Rheumatol* 2006;**33**:1329–40.
31. **Tat SK**, Pelletier JP, Vergés J, *et al*. Chondroitin and glucosamine sulfate in combination decrease the pro-resorptive properties of human osteoarthritis subchondral bone osteoblasts: a basic science study. *Arthritis Res Ther* 2007;**9**:R117.
32. **Jomphe C**, Gabriac M, Hale TM, *et al*. Chondroitin sulfate inhibits the nuclear translocation of nuclear factor-kappaB in interleukin-1beta-stimulated chondrocytes. *Basic Clin Pharmacol Toxicol* 2008;**102**:59–65.
33. **Monfort J**, Pelletier JP, Garcia-Giralt N, *et al*. Biochemical basis of the effect of chondroitin sulphate on osteoarthritis articular tissues. *Ann Rheum Dis* 2008;**67**:735–40.
34. **du Souich P**, Garcia AG, Vergés J, *et al*. Immunomodulatory and anti-inflammatory effects of chondroitin sulphate. *J Cell Mol Med* 2009;**13**(8A):1451–63.
35. **Martel-Pelletier J**, Kwan Tat S, Pelletier JP. Effects of chondroitin sulfate in the pathophysiology of the osteoarthritic joint: a narrative review. *Osteoarthritis Cartil* 2010;**18**(Suppl 1):S7–11.
36. **Leeb BF**, Schweitzer H, Montag K, *et al*. A metaanalysis of chondroitin sulfate in the treatment of osteoarthritis. *J Rheumatol* 2000;**27**:205–11.
37. **McAlindon TE**, LaValley MP, Gulin JP, *et al*. Glucosamine and chondroitin for treatment of osteoarthritis: a systematic quality assessment and meta-analysis. *JAMA* 2000;**283**:1469–75.
38. **Richy F**, Bruyere O, Ethgen O, *et al*. Structural and symptomatic efficacy of glucosamine and chondroitin in knee osteoarthritis: a comprehensive meta-analysis. *Arch Intern Med* 2003;**163**:1514–22.
39. **Hochberg MC**, Zhan M, Langenberg P. The rate of decline of joint space width in patients with osteoarthritis of the knee: a systematic review and meta-analysis of randomized placebo-controlled trials of chondroitin sulfate. *Curr Med Res Opin* 2008;**24**:3029–35.
40. **Lee YH**, Woo JH, Choi SJ, *et al*. Effect of glucosamine or chondroitin sulfate on the osteoarthritis progression: a meta-analysis. *Rheumatol Int* 2010;**30**:357–63.
41. **Altman R**, Asch E, Bloch D, *et al*. Development of criteria for the classification and reporting of osteoarthritis. Classification of osteoarthritis of the knee. Diagnostic and Therapeutic Criteria Committee of the American Rheumatism Association. *Arthritis Rheum* 1986;**29**:1039–49.
42. **Kellgren JH**, Lawrence JS. Radiological assessment of osteo-arthritis. *Ann Rheum Dis* 1957;**16**:494–502.
43. **Raynauld JP**, Martel-Pelletier J, Berthiaume MJ, *et al*. Quantitative magnetic resonance imaging evaluation of knee osteoarthritis progression over two years and correlation with clinical symptoms and radiologic changes. *Arthritis Rheum* 2004;**50**:476–87.
44. **Kauffmann C**, Gravel P, Godbout B, *et al*. Computer-aided method for quantification of cartilage thickness and volume changes using MRI: validation study using a synthetic model. *IEEE Trans Biomed Eng* 2003;**50**:978–88.
45. **Pelletier JP**, Raynauld JP, Berthiaume MJ, *et al*. Risk factors associated with the loss of cartilage volume on weight-bearing areas in knee osteoarthritis patients assessed by quantitative magnetic resonance imaging: a longitudinal study. *Arthritis Res Ther* 2007;**9**:R74.
46. **Raynauld JP**, Martel-Pelletier J, Berthiaume MJ, *et al*. Long term evaluation of disease progression through the quantitative magnetic resonance imaging of symptomatic knee osteoarthritis patients: correlation with clinical symptoms and radiographic changes. *Arthritis Res Ther* 2006;**8**:R21.
47. **Felson DT**, McLaughlin S, Goggins J, *et al*. Bone marrow edema and its relation to progression of knee osteoarthritis. *Ann Intern Med* 2003;**139**:330–6.
48. **Hunter DJ**, Zhang Y, Niu J, *et al*. Increase in bone marrow lesions associated with cartilage loss: a longitudinal magnetic resonance imaging study of knee osteoarthritis. *Arthritis Rheum* 2006;**54**:1529–35.

49. **Kijowski R**, Stanton P, Fine J, *et al*. Subchondral bone marrow edema in patients with degeneration of the articular cartilage of the knee joint. *Radiology* 2006;**238**:943–9.
50. **Scher C**, Craig J, Nelson F. Bone marrow edema in the knee in osteoarthritis and association with total knee arthroplasty within a three-year follow-up. *Skeletal Radiol* 2008;**37**:609–17.
51. **Roemer FW**, Guermazi A, Javaid MK, *et al*. Change in MRI-detected subchondral bone marrow lesions is associated with cartilage loss: the MOST Study. A longitudinal multicentre study of knee osteoarthritis. *Ann Rheum Dis* 2009;**68**:1461–5.
52. **Hochberg MC**. Structure-modifying effects of chondroitin sulfate in knee osteoarthritis: an updated meta-analysis of randomized placebo-controlled trials of 2-year duration. *Osteoarthr Cartil* 2010;**18**(Suppl 1):S28–31.
53. **Wandel S**, Jüni P, Tendal B, *et al*. Effects of glucosamine, chondroitin, or placebo in patients with osteoarthritis of hip or knee: network meta-analysis. *BMJ* 2010;**341**:c4675.
54. **Sawitzke AD**, Shi H, Finco MF, *et al*. The effect of glucosamine and/or chondroitin sulfate on the progression of knee osteoarthritis: a report from the glucosamine/chondroitin arthritis intervention trial. *Arthritis Rheum* 2008;**58**:3183–91.
55. **Hanna FS**, Teichtahl AJ, Wluka AE, *et al*. Women have increased rates of cartilage loss and progression of cartilage defects at the knee than men: a gender study of adults without clinical knee osteoarthritis. *Menopause* 2009;**16**:666–70.
56. **Raynauld JP**, Martel-Pelletier J, Beaulieu A, *et al*. An open-label pilot study evaluating by magnetic resonance imaging the potential for a disease-modifying effect of celecoxib compared to a modeled historical control cohort in the treatment of knee osteoarthritis. *Semin Arthritis Rheum* 2010;**40**:185–92.
57. **Martig S**, Boisclair J, Konar M, *et al*. MRI characteristics and histology of bone marrow lesions in dogs with experimentally induced osteoarthritis. *Vet Radiol Ultrasound* 2007;**48**:105–12.
58. **Albertini R**, Passi A, Abuja PM, *et al*. The effect of glycosaminoglycans and proteoglycans on lipid peroxidation. *Int J Mol Med* 2000;**6**:129–36.
59. **Campo GM**, Avenoso A, Campo S, *et al*. Efficacy of treatment with glycosaminoglycans on experimental collagen-induced arthritis in rats. *Arthritis Res Ther* 2003;**5**:R122–31.
60. **Cho SY**, Sim JS, Jeong CS, *et al*. Effects of low molecular weight chondroitin sulfate on type II collagen-induced arthritis in DBA/1J mice. *Biol Pharm Bull* 2004;**27**:47–51.
61. **Largo R**, Roman-Blas JA, Moreno-Rubio J, *et al*. Chondroitin sulfate improves synovitis in rabbits with chronic antigen-induced arthritis. *Osteoarthr Cartil* 2010;**18**(Suppl 1):S17–23.
62. **Clegg DO**, Reda DJ, Harris CL, *et al*. Glucosamine, chondroitin sulfate, and the two in combination for painful knee osteoarthritis. *N Engl J Med* 2006;**354**:795–808.
63. **Möller I**, Pérez M, Monfort J, *et al*. Effectiveness of chondroitin sulphate in patients with concomitant knee osteoarthritis and psoriasis: a randomized, double-blind, placebo-controlled study. *Osteoarthr Cartil* 2010;**18** Suppl 1:S32–40.